

## Anti-VCAM1 antibody (300-400) (STJ26075)

STJ26075

### GENERAL INFORMATION

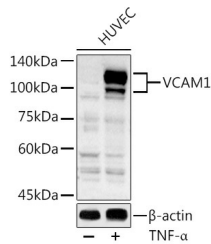
<b>Product Type</b>	Primary antibodies
<b>Short Description</b>	Rabbit polyclonal antibody anti-VCAM1 (300-400) is suitable for use in Western Blot, Immunohistochemistry and Immunoprecipitation.
<b>Applications</b>	WB, IHC, IP
<b>Host/Source</b>	Rabbit
<b>Reactivity</b>	Human, Mouse, Rat

### PRODUCT PROPERTIES

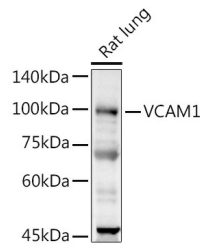
<b>Clonality</b>	Polyclonal
<b>Clone ID</b>	
<b>Concentration</b>	
<b>Conjugation</b>	Unconjugated
<b>Purification</b>	Affinity purification
<b>Dilution Range</b>	WB 1:1000-1:3000 IHC 1:50-1:200 IP 1:50-1:200
<b>Formulation</b>	PBS containing 0.02% Sodium Azide, 50% Glycerol, pH7.3.
<b>Isotype</b>	IgG
<b>Storage Instruction</b>	Store in a freezer at -20°C and avoid freeze-thaw cycles.

### TARGET INFORMATION

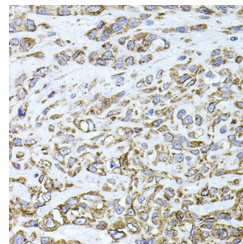
<b>Gene ID</b>	7412
<b>Gene Symbol</b>	VCAM1
<b>Uniprot ID</b>	VCAM1_HUMAN
<b>Immunogen</b>	A synthetic peptide corresponding to a sequence within amino acids 300-400 of human VCAM1 (NP_001069.1).
<b>Immunogen Region</b>	300-400
<b>Specificity</b>	
<b>Immunogen Sequence</b>	



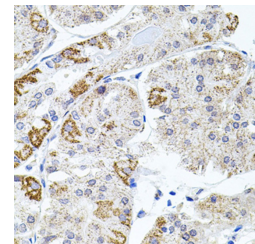
Western blot analysis of extracts of HUVEC cells, using VCAM1 antibody (STJ26075) at 1:1000 dilution. HUVEC cells were treated by TNF-Alpha (20 ng/ml) at 37 °C for 30 minutes after serum-starvation overnight. Secondary antibody: HRP Goat Anti-rabbit IgG (H+L) at 1:10000 dilution. Lysates/proteins: 25ug per lane. Blocking buffer: 3% nonfat dry milk in TBST. Detection: ECL Basic Kit. Exposure time: 30s.



Western blot analysis of extracts of Rat lung, using VCAM1 antibody (STJ26075) at 1:1000 dilution. Secondary antibody: HRP Goat Anti-rabbit IgG (H+L) at 1:10000 dilution. Lysates/proteins: 25ug per lane. Blocking buffer: 3% nonfat dry milk in TBST. Detection: ECL Basic Kit. Exposure time: 180s.



Immunohistochemistry of paraffin-embedded Human lung cancer using VCAM1 antibody (STJ26075) at dilution of 1:100 (40x lens).



Immunohistochemistry of paraffin-embedded Human stomach using VCAM1 antibody (STJ26075) at dilution of 1:100 (40x lens).