

Anti-TUBGCP3 antibody (1-250) (STJ25993)

STJ25993

GENERAL INFORMATION

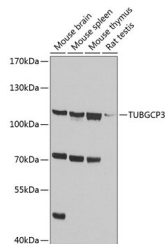
Product Type	Primary antibodies
Short Description	Rabbit polyclonal antibody anti-TUBGCP3 (1-250) is suitable for use in Western Blot, Immunohistochemistry and Immunofluorescence.
Applications	WB, IHC, IF
Host/Source	Rabbit
Reactivity	Human, Mouse, Rat

PRODUCT PROPERTIES

Clonality	Polyclonal
Clone ID	
Concentration	
Conjugation	Unconjugated
Purification	Affinity purification
Dilution Range	WB 1:500-1:2000 IHC 1:50-1:100 IF 1:50-1:100
Formulation	PBS containing 0.02% Sodium Azide, 50% Glycerol, pH7.3.
Isotype	IgG
Storage Instruction	Store in a freezer at -20°C and avoid freeze-thaw cycles.

TARGET INFORMATION

Gene ID	10426
Gene Symbol	TUBGCP3
Uniprot ID	GCP3_HUMAN
Immunogen	Recombinant fusion protein containing a sequence corresponding to amino acids 1-250 of human TUBGCP3 (NP_001273207.1).
Immunogen Region	1-250
Specificity	
Immunogen Sequence	



Western blot analysis of extracts of various cell lines using TUBGCP3 antibody (STJ25993) at 1:1000 dilution. Secondary antibody: HRP Goat Anti-rabbit IgG (H+L) at 1:10000 dilution. Lysates/proteins: 25ug per lane. Blocking buffer: 3% nonfat dry milk in TBST. Detection: ECL Basic Kit. Exposure time: 30s.