

Anti-TPM1 antibody (1-245) (STJ25940)

STJ25940

GENERAL INFORMATION

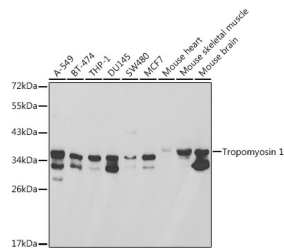
Product Type	Primary antibodies
Short Description	Rabbit polyclonal antibody anti-TPM1 (1-245) is suitable for use in Western Blot, Immunohistochemistry and Immunofluorescence.
Applications	WB, IHC, IF
Host/Source	Rabbit
Reactivity	Human, Mouse, Rat, Zebrafish

PRODUCT PROPERTIES

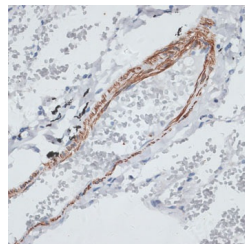
Clonality	Polyclonal
Clone ID	
Concentration	
Conjugation	Unconjugated
Purification	Affinity purification
Dilution Range	WB 1:500-1:2000 IHC 1:50-1:200 IF 1:50-1:200
Formulation	PBS containing 0.02% Sodium Azide, 50% Glycerol, pH7.3.
Isotype	IgG
Storage Instruction	Store in a freezer at -20°C and avoid freeze-thaw cycles.

TARGET INFORMATION

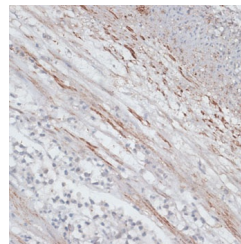
Gene ID	7168
Gene Symbol	TPM1
Uniprot ID	TPM1_HUMAN
Immunogen	Recombinant fusion protein containing a sequence corresponding to amino acids 1-245 of human Tropomyosin 1 (NP_001018008.1).
Immunogen Region	1-245
Specificity	
Immunogen Sequence	



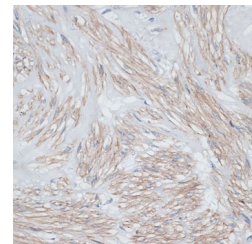
Western blot analysis of extracts of various cell lines, using Tropomyosin 1 antibody (STJ25940) at 1:1000 dilution. Secondary antibody: HRP Goat Anti-rabbit IgG (H+L) at 1:10000 dilution. Lysates/proteins: 25ug per lane. Blocking buffer: 3% nonfat dry milk in TBST.



Immunohistochemistry of paraffin-embedded human lung using Tropomyosin 1 antibody (STJ25940) at dilution of 1:100 (40x lens).



Immunohistochemistry of paraffin-embedded human appendix using Tropomyosin 1 antibody (STJ25940) at dilution of 1:100 (40x lens).



Immunohistochemistry of paraffin-embedded human uterus using Tropomyosin 1 antibody (STJ25940) at dilution of 1:100 (40x lens).