

Anti-TJP1 antibody (1600-1700) (STJ25857)

STJ25857

GENERAL INFORMATION

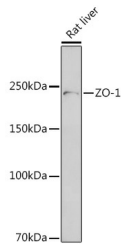
| | |
|--------------------------|--|
| Product Type | Primary antibodies |
| Short Description | Rabbit polyclonal antibody anti-ZO-1 (1600-1700) is suitable for use in Western Blot, Immunohistochemistry and Immunofluorescence. |
| Applications | WB, IHC, IF |
| Host/Source | Rabbit |
| Reactivity | Human, Mouse, Rat |

PRODUCT PROPERTIES

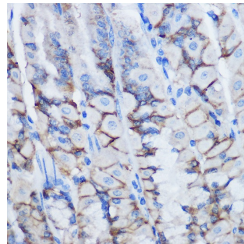
| | |
|----------------------------|---|
| Clonality | Polyclonal |
| Clone ID | |
| Concentration | |
| Conjugation | Unconjugated |
| Purification | Affinity purification |
| Dilution Range | WB 1:500-1:2000 IHC 1:50-1:200 IF 1:50-1:200 |
| Formulation | PBS containing 0.02% Sodium Azide, 50% Glycerol, pH7.3. |
| Isotype | IgG |
| Storage Instruction | Store in a freezer at -20°C and avoid freeze-thaw cycles. |

TARGET INFORMATION

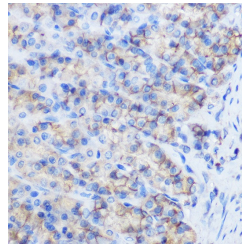
| | |
|---------------------------|---|
| Gene ID | 7082 |
| Gene Symbol | TJP1 |
| Uniprot ID | ZO1_HUMAN |
| Immunogen | A synthetic peptide corresponding to a sequence within amino acids 1600-1700 of human ZO-1 (NP_003248.3). |
| Immunogen Region | 1600-1700 |
| Specificity | |
| Immunogen Sequence | |



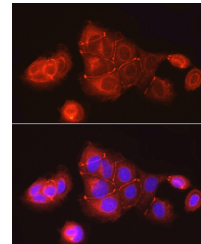
Western blot analysis of extracts of Rat liver, using ZO-1 antibody (STJ25857) at 1:1000 dilution. Secondary antibody: HRP Goat Anti-rabbit IgG (H+L) at 1:10000 dilution. Lysates/proteins: 25ug per lane. Blocking buffer: 3% nonfat dry milk in TBST. Detection: ECL Basic Kit. Exposure time: 30s.



Immunohistochemistry of paraffin-embedded mouse stomach using ZO-1 antibody (STJ25857) at dilution of 1:100 (40x lens). Perform microwave antigen retrieval with 10 mM Tris/EDTA buffer pH 9.0 before commencing with immunohistochemistry staining protocol.



Immunohistochemistry of paraffin-embedded Rat stomach using ZO-1 antibody (STJ25857) at dilution of 1:100 (40x lens). Perform microwave antigen retrieval with 10 mM Tris/EDTA buffer pH 9.0 before commencing with immunohistochemistry staining protocol.



Immunofluorescence analysis of MCF7 cells using ZO-1 rabbit polyclonal antibody (STJ25857) at dilution of 1:150 (40x lens). Blue: DAPI for nuclear staining.

This product is suitable for in-vitro studies under the RESEARCH USE ONLY [RUO] licence. This product must not be used as for diagnostic or other medical purposes.
St John's Laboratory Ltd, Knowledge Dock Business Centre, University Way, London, E16 2RD | Tel: 0208 223 3081