

Anti-TCF4 antibody (400-500) (STJ25793)

STJ25793

GENERAL INFORMATION

Product Type	Primary antibodies
Short Description	Rabbit polyclonal antibody anti-TCF4 (400-500) is suitable for use in Western Blot and Immunofluorescence.
Applications	WB, IF
Host/Source	Rabbit
Reactivity	Human, Mouse, Rat

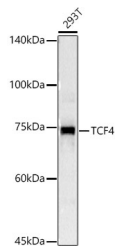
PRODUCT PROPERTIES

Clonality	Polyclonal
Clone ID	
Concentration	
Conjugation	Unconjugated
Purification	Affinity purification
Dilution Range	WB 1:500-1:2000 IF 1:50-1:200
Formulation	PBS containing 0.02% Sodium Azide, 50% Glycerol, pH7.3.
Isotype	IgG
Storage Instruction	Store in a freezer at -20°C and avoid freeze-thaw cycles.

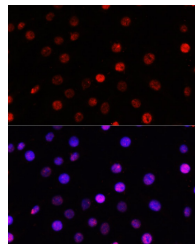
TARGET INFORMATION

Gene ID	6925
Gene Symbol	TCF4
Uniprot ID	ITF2_HUMAN
Immunogen	Recombinant fusion protein containing a sequence corresponding to amino acids 400-500 of human TCF4 (NP_001077431.1).

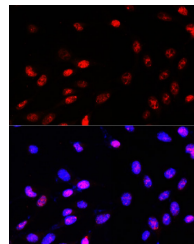
Immunogen Region
400-500
Specificity
Immunogen
Sequence



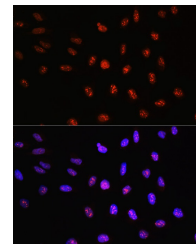
Western blot analysis of extracts of 293T cells, using TCF4 antibody (STJ25793) at 1:1000 dilution. Secondary antibody: HRP Goat Anti-rabbit IgG (H+L) at 1:10000 dilution. Lysates/proteins: 25ug per lane. Blocking buffer: 3% nonfat dry milk in TBST. Detection: ECL Basic Kit. Exposure time: 3s.



Immunofluorescence analysis of C6 cells using TCF4 rabbit polyclonal antibody (STJ25793) at dilution of 100 (40x lens). Blue: DAPI for nuclear staining.



Immunofluorescence analysis of NIH-3T3 cells using TCF4 rabbit polyclonal antibody (STJ25793) at dilution of 100 (40x lens). Blue: DAPI for nuclear staining.



Immunofluorescence analysis of U-2 OS cells using TCF4 rabbit polyclonal antibody (STJ25793) at dilution of 100 (40x lens). Blue: DAPI for nuclear staining.

This product is suitable for in-vitro studies under the RESEARCH USE ONLY [RUO] licence. This product must not be used as for diagnostic or other medical purposes.
St John's Laboratory Ltd, Knowledge Dock Business Centre, University Way, London, E16 2RD | Tel: 0208 223 3081