

Anti-SUMO4 antibody (STJ25751)

STJ25751

GENERAL INFORMATION

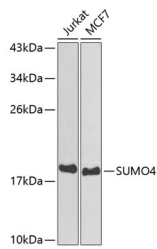
Product Type	Primary antibodies
Short Description	Rabbit polyclonal antibody anti-SUMO4 is suitable for use in Western Blot and Immunohistochemistry.
Applications	WB, IHC
Host/Source	Rabbit
Reactivity	Human, Mouse

PRODUCT PROPERTIES

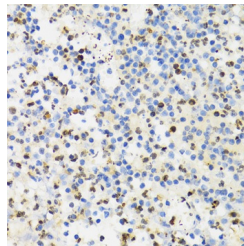
Clonality	Polyclonal
Clone ID	
Concentration	
Conjugation	Unconjugated
Purification	Affinity purification
Dilution Range	WB 1:1000-1:2000 IHC 1:100-1:300
Formulation	PBS containing 0.02% Sodium Azide, 50% Glycerol, pH7.3.
Isotype	IgG
Storage Instruction	Store in a freezer at -20°C and avoid freeze-thaw cycles.

TARGET INFORMATION

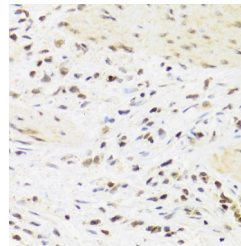
Gene ID	387082
Gene Symbol	SUMO4
Uniprot ID	SUMO4_HUMAN
Immunogen	A synthetic peptide of human SUMO4
Immunogen Region	
Specificity	
Immunogen Sequence	



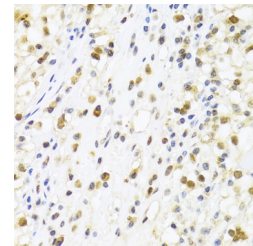
Western blot analysis of extracts of various cell lines, using SUMO4 antibody (STJ25751) at 1:800 dilution. Secondary antibody: HRP-Goat Anti-rabbit IgG (H+L) at 1:10000 dilution. Lysates/proteins: 25ug per lane. Blocking buffer: 3% nonfat dry milk in TBST.



Immunohistochemistry of paraffin-embedded human appendix using SUMO4 Antibody (STJ25751) at dilution of 1:100 (40x lens).



Immunohistochemistry of paraffin-embedded human breast cancer using SUMO4 Antibody (STJ25751) at dilution of 1:100 (40x lens).



Immunohistochemistry of paraffin-embedded human kidney cancer using SUMO4 Antibody (STJ25751) at dilution of 1:100 (40x lens).

This product is suitable for in-vitro studies under the RESEARCH USE ONLY [RUO] licence. This product must not be used as for diagnostic or other medical purposes.
St John's Laboratory Ltd, Knowledge Dock Business Centre, University Way, London, E16 2RD | Tel: 0208 223 3081