

Anti-SLC39A4 antibody (23-327) (STJ25583)

STJ25583

GENERAL INFORMATION

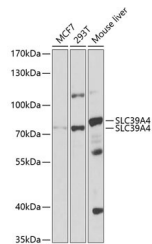
Product Type	Primary antibodies
Short Description	Rabbit polyclonal antibody anti-SLC39A4 (23-327) is suitable for use in Western Blot and Immunohistochemistry.
Applications	WB, IHC
Host/Source	Rabbit
Reactivity	Human, Mouse, Rat

PRODUCT PROPERTIES

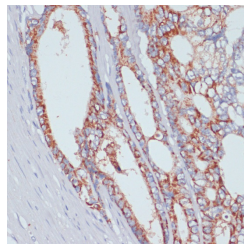
Clonality	Polyclonal
Clone ID	
Concentration	
Conjugation	Unconjugated
Purification	Affinity purification
Dilution Range	WB 1:500-1:2000 IHC 1:50-1:100
Formulation	PBS containing 0.02% Sodium Azide, 50% Glycerol, pH7.3.
Isotype	IgG
Storage Instruction	Store in a freezer at -20°C and avoid freeze-thaw cycles.

TARGET INFORMATION

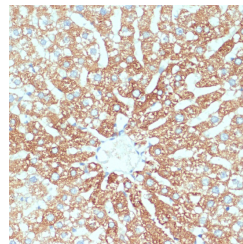
Gene ID	55630
Gene Symbol	SLC39A4
Uniprot ID	S39A4_HUMAN
Immunogen	Recombinant fusion protein containing a sequence corresponding to amino acids 23-327 of human SLC39A4 (NP_570901.2).
Immunogen Region	23-327
Specificity	
Immunogen Sequence	



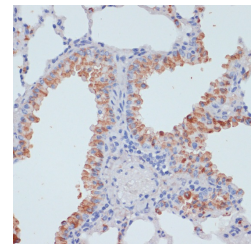
Western blot analysis of extracts of various cell lines, using SLC39A4 antibody (STJ25583) at 1:1000 dilution. Secondary antibody: HRP Goat Anti-rabbit IgG (H+L) at 1:10000 dilution. Lysates/proteins: 25ug per lane. Blocking buffer: 3% nonfat dry milk in TBST. Detection: ECL Basic Kit. Exposure time: 30s.



Immunohistochemistry of paraffin-embedded human colon carcinoma using SLC39A4 antibody (STJ25583) at dilution of 1:100 (40x lens).



Immunohistochemistry of paraffin-embedded rat liver using SLC39A4 antibody (STJ25583) at dilution of 1:100 (40x lens).



Immunohistochemistry of paraffin-embedded mouse lung using SLC39A4 antibody (STJ25583) at dilution of 1:100 (40x lens).