

Anti-SLC1A4 antibody (STJ25559)

STJ25559

GENERAL INFORMATION

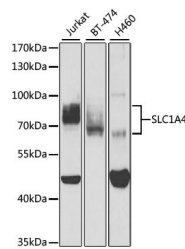
Product Type	Primary antibodies
Short Description	Rabbit polyclonal antibody anti-SLC1A4 is suitable for use in Western Blot, Immunohistochemistry and Immunofluorescence.
Applications	WB, IHC, IF
Host/Source	Rabbit
Reactivity	Human, Mouse, Rat

PRODUCT PROPERTIES

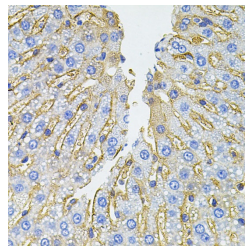
Clonality	Polyclonal
Clone ID	
Concentration	
Conjugation	Unconjugated
Purification	Affinity purification
Dilution Range	WB 1:500-1:1000 IHC 1:50-1:100 IF 1:100-1:200
Formulation	PBS containing 0.02% Sodium Azide, 50% Glycerol, pH7.3.
Isotype	IgG
Storage Instruction	Store in a freezer at -20°C and avoid freeze-thaw cycles.

TARGET INFORMATION

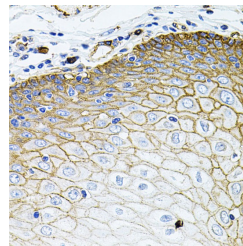
Gene ID	6509
Gene Symbol	SLC1A4
Uniprot ID	SATT_HUMAN
Immunogen	A synthetic peptide of human SLC1A4
Immunogen Region	
Specificity	
Immunogen Sequence	



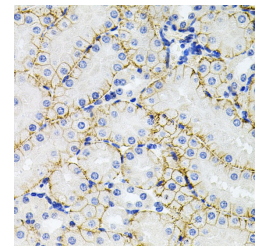
Western blot analysis of extracts of various cell lines, using SLC1A4 antibody (STJ25559) at 1:400 dilution. Secondary antibody: HRP Goat Anti-rabbit IgG (H+L) at 1:10000 dilution. Lysates/proteins: 25ug per lane. Blocking buffer: 3% nonfat dry milk in TBST. Detection: ECL Basic Kit. Exposure time: 60s.



Immunohistochemistry of paraffin-embedded rat liver using SLC1A4 antibody (STJ25559) (40x lens).



Immunohistochemistry of paraffin-embedded human esophagus using SLC1A4 antibody (STJ25559) (40x lens).



Immunohistochemistry of paraffin-embedded mouse kidney using SLC1A4 antibody (STJ25559) (40x lens).