

Anti-SERPING1 antibody (201-500) (STJ25490)

STJ25490

GENERAL INFORMATION

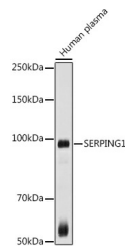
Product Type	Primary antibodies
Short Description	Rabbit polyclonal antibody anti-C1 Inactivator (201-500) is suitable for use in Western Blot and Immunofluorescence.
Applications	WB, IF
Host/Source	Rabbit
Reactivity	Human, Mouse, Rat

PRODUCT PROPERTIES

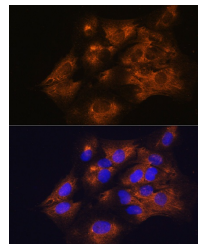
Clonality	Polyclonal
Clone ID	
Concentration	
Conjugation	Unconjugated
Purification	Affinity purification
Dilution Range	WB 1:1000-1:2000 IF 1:50-1:200
Formulation	PBS containing 0.02% Sodium Azide, 50% Glycerol, pH7.3.
Isotype	IgG
Storage Instruction	Store in a freezer at -20°C and avoid freeze-thaw cycles.

TARGET INFORMATION

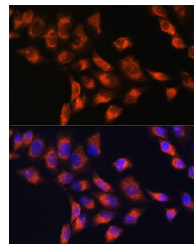
Gene ID	710
Gene Symbol	SERPING1
Uniprot ID	IC1_HUMAN
Immunogen	Recombinant fusion protein containing a sequence corresponding to amino acids 201-500 of human SERPING1 (NP_001027466.1).
Immunogen Region	201-500
Specificity	
Immunogen Sequence	



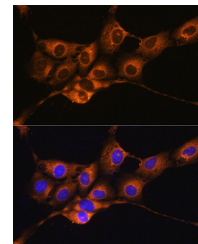
Western blot analysis of extracts of Human plasma, using SERPING1 antibody (STJ25490) at 1:1000 dilution. Secondary antibody: HRP Goat Anti-rabbit IgG (H+L) at 1:10000 dilution. Lysates/proteins: 25ug per lane. Blocking buffer: 3% nonfat dry milk in TBST. Detection: ECL Basic Kit. Exposure time: 30s.



Immunofluorescence analysis of C6 cells using SERPING1 antibody (STJ25490) at dilution of 1:100. Blue: DAPI for nuclear staining.



Immunofluorescence analysis of HeLa cells using SERPING1 antibody (STJ25490) at dilution of 1:100. Blue: DAPI for nuclear staining.



Immunofluorescence analysis of NIH/3T3 cells using SERPING1 antibody (STJ25490) at dilution of 1:100. Blue: DAPI for nuclear staining.