

Anti-S100A7 antibody (1-101) (STJ25433)

STJ25433

GENERAL INFORMATION

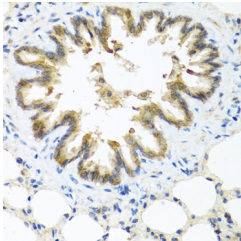
Product Type	Primary antibodies
Short Description	Rabbit polyclonal antibody anti-S100A7 (1-101) is suitable for use in Immunohistochemistry.
Applications	IHC
Host/Source	Rabbit
Reactivity	Human, Mouse, Rat

PRODUCT PROPERTIES

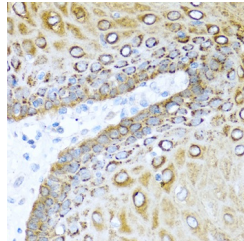
Clonality	Polyclonal
Clone ID	
Concentration	
Conjugation	Unconjugated
Purification	Affinity purification
Dilution Range	IHC 1:50-1:200
Formulation	PBS containing 0.02% Sodium Azide, 50% Glycerol, pH7.3.
Isotype	IgG
Storage Instruction	Store in a freezer at -20°C and avoid freeze-thaw cycles.

TARGET INFORMATION

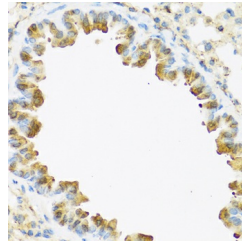
Gene ID	6278
Gene Symbol	S100A7
Uniprot ID	S10A7_HUMAN
Immunogen	Recombinant fusion protein containing a sequence corresponding to amino acids 1-101 of human S100A7 (NP_002954.2).
Immunogen Region	1-101
Specificity	
Immunogen Sequence	



Immunohistochemistry of paraffin-embedded rat lung using S100A7 antibody (STJ25433) at dilution of 1:100 (40x lens).



Immunohistochemistry of paraffin-embedded human esophagus using S100A7 antibody (STJ25433) at dilution of 1:100 (40x lens).



Immunohistochemistry of paraffin-embedded mouse lung using S100A7 antibody (STJ25433) at dilution of 1:100 (40x lens).

This product is suitable for in-vitro studies under the RESEARCH USE ONLY [RUO] licence. This product must not be used as for diagnostic or other medical purposes.
St John's Laboratory Ltd, Knowledge Dock Business Centre, University Way, London, E16 2RD | Tel: 0208 223 3081