

Anti-PSAP antibody (60-310) (STJ25165)

STJ25165

GENERAL INFORMATION

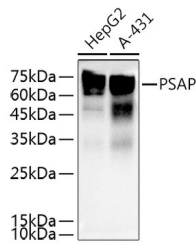
Product Type	Primary antibodies
Short Description	Rabbit polyclonal antibody anti-PSAP (60-310) is suitable for use in Western Blot, Immunohistochemistry and Immunofluorescence.
Applications	WB, IHC, IF
Host/Source	Rabbit
Reactivity	Human, Mouse, Rat

PRODUCT PROPERTIES

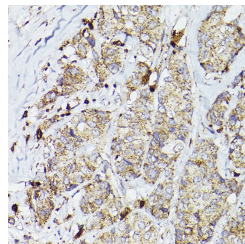
Clonality	Polyclonal
Clone ID	
Concentration	
Conjugation	Unconjugated
Purification	Affinity purification
Dilution Range	WB 1:500-1:2000 IHC 1:50-1:200 IF 1:50-1:200
Formulation	PBS containing 0.02% Sodium Azide, 50% Glycerol, pH7.3.
Isotype	IgG
Storage Instruction	Store in a freezer at -20°C and avoid freeze-thaw cycles.

TARGET INFORMATION

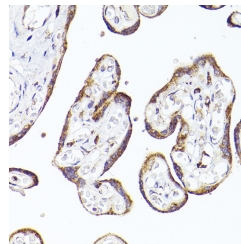
Gene ID	5660
Gene Symbol	PSAP
Uniprot ID	SAP_HUMAN
Immunogen	Recombinant fusion protein containing a sequence corresponding to amino acids 60-310 of human PSAP (NP_002769.1).
Immunogen Region	60-310
Specificity	
Immunogen Sequence	



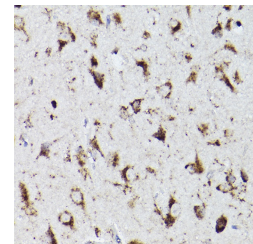
Western blot analysis of extracts of various cell lines, using PSAP antibody (STJ25165) at 1:500 dilution. Secondary antibody: HRP Goat Anti-rabbit IgG (H+L) at 1:10000 dilution. Lysates/proteins: 25µg per lane. Blocking buffer: 3% nonfat dry milk in TBST. Detection: ECL Basic Kit. Exposure time: 5s.



Immunohistochemistry of paraffin-embedded human breast cancer using PSAP rabbit polyclonal antibody (STJ25165) at dilution of 1:50 (40x lens).



Immunohistochemistry of paraffin-embedded human placenta using PSAP rabbit polyclonal antibody (STJ25165) at dilution of 1:50 (40x lens).



Immunohistochemistry of paraffin-embedded mouse brain using PSAP rabbit polyclonal antibody (STJ25165) at dilution of 1:100 (40x lens).