

Anti-PRSS1 antibody (24-247) (STJ25163)

STJ25163

GENERAL INFORMATION

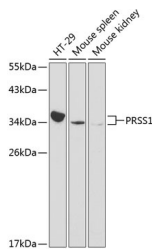
Product Type	Primary antibodies
Short Description	Rabbit polyclonal antibody anti-PRSS1 (24-247) is suitable for use in Western Blot and Immunohistochemistry.
Applications	WB, IHC
Host/Source	Rabbit
Reactivity	Human, Mouse

PRODUCT PROPERTIES

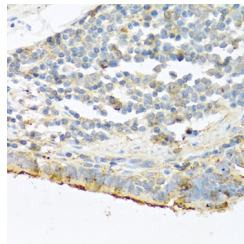
Clonality	Polyclonal
Clone ID	
Concentration	
Conjugation	Unconjugated
Purification	Affinity purification
Dilution Range	WB 1:500-1:2000 IHC 1:100-1:200
Formulation	PBS containing 0.02% Sodium Azide, 50% Glycerol, pH7.3.
Isotype	IgG
Storage Instruction	Store in a freezer at -20°C and avoid freeze-thaw cycles.

TARGET INFORMATION

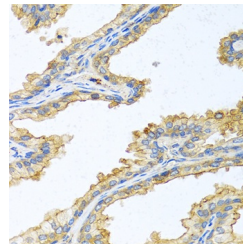
Gene ID	5644
Gene Symbol	PRSS1
Uniprot ID	TRY1_HUMAN
Immunogen	Recombinant fusion protein containing a sequence corresponding to amino acids 24-247 of human PRSS1 (NP_002760.1).
Immunogen Region	24-247
Specificity	
Immunogen Sequence	



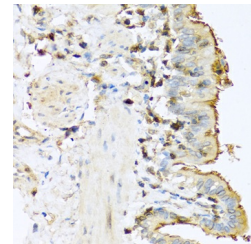
Western blot analysis of extracts of various cell lines, using PRSS1 antibody (STJ25163) at 1:1000 dilution. Secondary antibody: HRP Goat Anti-rabbit IgG (H+L) at 1:10000 dilution. Lysates/proteins: 25ug per lane. Blocking buffer: 3% nonfat dry milk in TBS-T.



Immunohistochemistry of paraffin-embedded human lung cancer using PRSS1 antibody (STJ25163) at dilution of 1:100 (40x lens).



Immunohistochemistry of paraffin-embedded human prostate using PRSS1 antibody (STJ25163) at dilution of 1:100 (40x lens).



Immunohistochemistry of paraffin-embedded mouse lung using PRSS1 antibody (STJ25163) at dilution of 1:100 (40x lens).

This product is suitable for in-vitro studies under the RESEARCH USE ONLY [RUO] licence. This product must not be used as for diagnostic or other medical purposes.
St John's Laboratory Ltd, Knowledge Dock Business Centre, University Way, London, E16 2RD | Tel: 0208 223 3081