

Anti-PRDX6 antibody (1-224) (STJ25108)

STJ25108

GENERAL INFORMATION

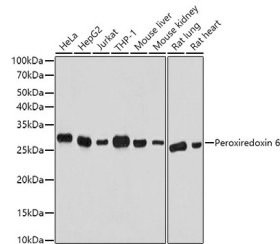
Product Type	Primary antibodies
Short Description	Rabbit polyclonal antibody anti-PRDX6 (1-224) is suitable for use in Western Blot, Immunohistochemistry and Immunofluorescence.
Applications	WB, IHC, IF
Host/Source	Rabbit
Reactivity	Human, Mouse, Rat

PRODUCT PROPERTIES

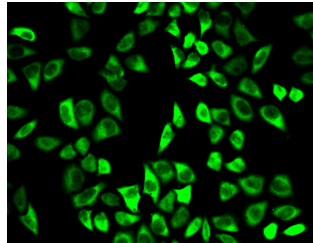
Clonality	Polyclonal
Clone ID	
Concentration	
Conjugation	Unconjugated
Purification	Affinity purification
Dilution Range	WB 1:500-1:2000 IHC 1:50-1:200 IF 1:50-1:200
Formulation	PBS containing 0.02% Sodium Azide, 50% Glycerol, pH7.3.
Isotype	IgG
Storage Instruction	Store in a freezer at -20°C and avoid freeze-thaw cycles.

TARGET INFORMATION

Gene ID	9588
Gene Symbol	PRDX6
Uniprot ID	PRDX6_HUMAN
Immunogen	Recombinant fusion protein containing a sequence corresponding to amino acids 1-224 of human Peroxiredoxin 6 (NP_004896.1).
Immunogen Region	1-224
Specificity	
Immunogen Sequence	



Western blot analysis of extracts of various cell lines, using Peroxiredoxin 6 antibody (STJ25108) at 1:1000 dilution. Secondary antibody: HRP Goat Anti-rabbit IgG (H+L) at 1:10000 dilution. Lysates/proteins: 25ug per lane. Blocking buffer: 3% nonfat dry milk in TBST. Detection: ECL Basic Kit. Exposure time: 30s.



Immunofluorescence analysis of HeLa cells using Peroxiredoxin 6 antibody (STJ25108).