

Anti-POLR2L antibody (1-67) (STJ25053)

STJ25053

GENERAL INFORMATION

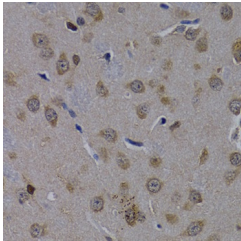
Product Type	Primary antibodies
Short Description	Rabbit polyclonal antibody anti-POLR2L (1-67) is suitable for use in Immunohistochemistry.
Applications	IHC
Host/Source	Rabbit
Reactivity	Mouse, Rat

PRODUCT PROPERTIES

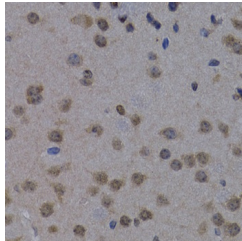
Clonality	Polyclonal
Clone ID	
Concentration	
Conjugation	Unconjugated
Purification	Affinity purification
Dilution Range	IHC 1:50-1:200
Formulation	PBS containing 0.02% Sodium Azide, 50% Glycerol, pH7.3.
Isotype	IgG
Storage Instruction	Store in a freezer at -20°C and avoid freeze-thaw cycles.

TARGET INFORMATION

Gene ID	5441
Gene Symbol	POLR2L
Uniprot ID	RPAB5_HUMAN
Immunogen	Recombinant fusion protein containing a sequence corresponding to amino acids 1-67 of human POLR2L (NP_066951.1).
Immunogen Region	1-67
Specificity	
Immunogen Sequence	



Immunohistochemistry of paraffin-embedded rat brain using POLR2L antibody (STJ25053) at dilution of 1:200 (40x lens).



Immunohistochemistry of paraffin-embedded mouse brain using POLR2L antibody (STJ25053) at dilution of 1:200 (40x lens).