

Anti-POLH antibody (20-320) (STJ25041)

STJ25041

GENERAL INFORMATION

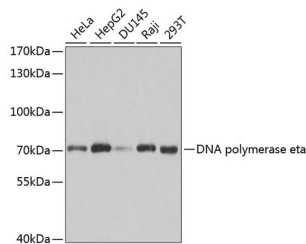
Product Type	Primary antibodies
Short Description	Rabbit polyclonal antibody anti-DNA polymerase eta (20-320) is suitable for use in Western Blot and Immunofluorescence.
Applications	WB, IF
Host/Source	Rabbit
Reactivity	Human, Mouse, Rat

PRODUCT PROPERTIES

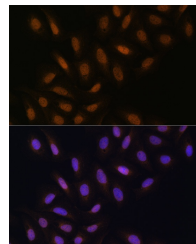
Clonality	Polyclonal
Clone ID	
Concentration	
Conjugation	Unconjugated
Purification	Affinity purification
Dilution Range	WB 1:500-1:2000 IF 1:50-1:200
Formulation	PBS containing 0.02% Sodium Azide, 50% Glycerol, pH7.3.
Isotype	IgG
Storage Instruction	Store in a freezer at -20°C and avoid freeze-thaw cycles.

TARGET INFORMATION

Gene ID	5429
Gene Symbol	POLH
Uniprot ID	POLH_HUMAN
Immunogen	Recombinant fusion protein containing a sequence corresponding to amino acids 20-320 of human DNA polymerase eta (NP_006493.1).
Immunogen Region	20-320
Specificity	
Immunogen Sequence	



Western blot analysis of extracts of various cell lines, using DNA polymerase eta antibody (STJ25041) at 1:1000 dilution. Secondary antibody: HRP Goat Anti-rabbit IgG (H+L) at 1:10000 dilution. Lysates/proteins: 25µg per lane. Blocking buffer: 3% nonfat dry milk in TBS1.



Immunofluorescence analysis of U-2 OS cells using DNA polymerase eta rabbit polyclonal antibody (STJ25041) at dilution of 1:100 (40x lens). Blue: DAPI for nuclear staining.