

Anti-POLB antibody (1-335) (STJ25039)

STJ25039

GENERAL INFORMATION

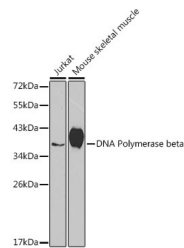
Product Type	Primary antibodies
Short Description	Rabbit polyclonal antibody anti-POLB (1-335) is suitable for use in Western Blot, Immunohistochemistry and Immunofluorescence.
Applications	WB, IHC, IF
Host/Source	Rabbit
Reactivity	Human, Mouse

PRODUCT PROPERTIES

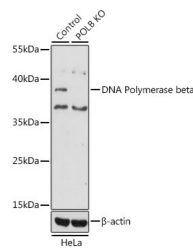
Clonality	Polyclonal
Clone ID	
Concentration	
Conjugation	Unconjugated
Purification	Affinity purification
Dilution Range	WB 1:200-1:1000 IHC 1:50-1:200 IF 1:20-1:200
Formulation	PBS containing 0.02% Sodium Azide, 50% Glycerol, pH7.3.
Isotype	IgG
Storage Instruction	Store in a freezer at -20°C and avoid freeze-thaw cycles.

TARGET INFORMATION

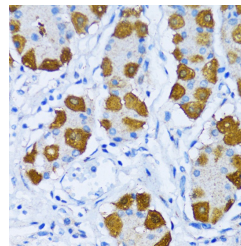
Gene ID	5423
Gene Symbol	POLB
Uniprot ID	DPOLB_HUMAN
Immunogen	Recombinant fusion protein containing a sequence corresponding to amino acids 1-335 of human DNA Polymerase beta (NP_002681.1).
Immunogen Region	1-335
Specificity	
Immunogen Sequence	



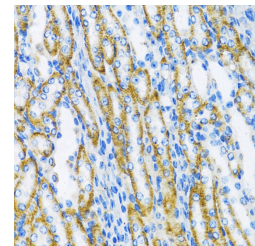
Western blot analysis of extracts of various cell lines, using DNA Polymerase beta antibody (STJ25039) at 1:1000 dilution. Secondary antibody: HRP Goat Anti-rabbit IgG (H+L) at 1:10000 dilution. Lysates/proteins: 25ug per lane. Blocking buffer: 3% nonfat dry milk in TBST. Detection: ECL Basic Kit. Exposure time: 30s.



Western blot analysis of extracts from normal (control) and DNA Polymerase beta knockout (KO) HeLa cells, using DNA Polymerase beta antibody (STJ25039) at 1:1000 dilution. Secondary antibody: HRP Goat Anti-rabbit IgG (H+L) at 1:10000 dilution. Lysates/proteins: 25ug per lane. Blocking buffer: 3% nonfat dry milk in TBST. Detection: ECL Basic Kit. Exposure time: 30s.



Immunohistochemistry of paraffin-embedded Human stomach using DNA Polymerase beta antibody (STJ25039) at dilution of 1:100 (40x lens).



Immunohistochemistry of paraffin-embedded mouse kidney using DNA Polymerase beta antibody (STJ25039) at dilution of 1:100 (40x lens).