

Anti-PKM antibody (11-221) (STJ25012)

STJ25012

GENERAL INFORMATION

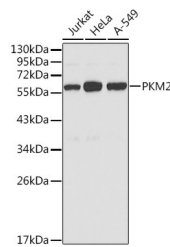
Product Type	Primary antibodies
Short Description	Rabbit polyclonal antibody anti-PKM (11-221) is suitable for use in Western Blot and Immunofluorescence.
Applications	WB, IF
Host/Source	Rabbit
Reactivity	Human, Mouse

PRODUCT PROPERTIES

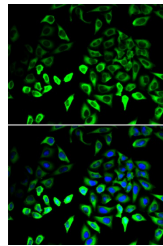
Clonality	Polyclonal
Clone ID	
Concentration	
Conjugation	Unconjugated
Purification	Affinity purification
Dilution Range	WB 1:500-1:2000 IF 1:20-1:100
Formulation	PBS containing 0.02% Sodium Azide, 50% Glycerol, pH7.3.
Isotype	IgG
Storage Instruction	Store in a freezer at -20°C and avoid freeze-thaw cycles.

TARGET INFORMATION

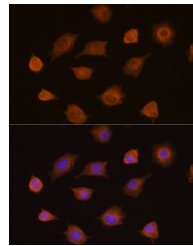
Gene ID	5315
Gene Symbol	PKM
Uniprot ID	KPYM_HUMAN
Immunogen	Recombinant fusion protein containing a sequence corresponding to amino acids 11-221 of human PKM2 (NP_002645.3).
Immunogen Region	11-221
Specificity	
Immunogen Sequence	



Western blot analysis of extracts of various cell lines, using PKM2 antibody (STJ25012) at 1:1000 dilution. Secondary antibody: HRP Goat Anti-rabbit IgG (H+L) at 1:10000 dilution. Lysates/proteins: 25µg per lane. Blocking buffer: 3% nonfat dry milk in TBST.



Immunofluorescence analysis of U2OS cells using PKM2 antibody (STJ25012). Blue: DAPI for nuclear staining.



Immunofluorescence analysis of L929 cells using PKM2 rabbit polyclonal antibody (STJ25012) at dilution of 1:100 (40x lens). Blue: DAPI for nuclear staining.

This product is suitable for in-vitro studies under the RESEARCH USE ONLY [RUO] licence. This product must not be used as for diagnostic or other medical purposes.
St John's Laboratory Ltd, Knowledge Dock Business Centre, University Way, London, E16 2RD | Tel: 0208 223 3081