

Anti-PDCD6IP antibody (1-180) (STJ24927)

STJ24927

GENERAL INFORMATION

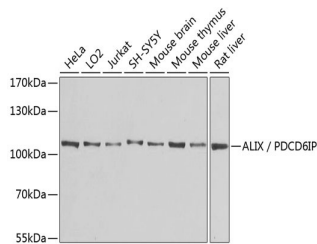
Product Type	Primary antibodies
Short Description	Rabbit polyclonal antibody anti-ALIX/PDCD6IP (1-180) is suitable for use in Western Blot, Immunohistochemistry and Immunofluorescence.
Applications	WB, IHC, IF
Host/Source	Rabbit
Reactivity	Human, Mouse, Rat

PRODUCT PROPERTIES

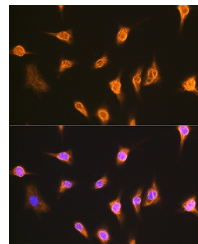
Clonality	Polyclonal
Clone ID	
Concentration	
Conjugation	Unconjugated
Purification	Affinity purification
Dilution Range	WB 1:200-1:2000 IHC 1:50-1:200 IF 1:50-1:200
Formulation	PBS containing 0.02% Sodium Azide, 50% Glycerol, pH7.3.
Isotype	IgG
Storage Instruction	Store in a freezer at -20°C and avoid freeze-thaw cycles.

TARGET INFORMATION

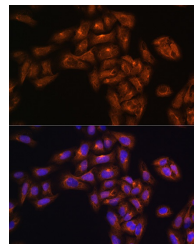
Gene ID	10015
Gene Symbol	PDCD6IP
Uniprot ID	PDC6I_HUMAN
Immunogen	Recombinant fusion protein containing a sequence corresponding to amino acids 1-180 of human ALIX/PDCD6IP (NP_037506.2).
Immunogen Region	1-180
Specificity	
Immunogen Sequence	



Western blot analysis of extracts of various cell lines, using ALIX/ PDCD6IP antibody (STJ24927) at 1:1000 dilution. Secondary antibody: HRP Goat Anti-rabbit IgG (H+L) at 1:10000 dilution. Lysates/proteins: 25ug per lane. Blocking buffer: 3% nonfat dry milk in TBST. Detection: ECL Enhanced Kit. Exposure time: 3min.



Immunofluorescence analysis of L929 cells using ALIX/ PDCD6IP antibody (STJ24927) at dilution of 1:100. Blue: DAPI for nuclear staining.



Immunofluorescence analysis of U-251MG cells using ALIX/ PDCD6IP antibody (STJ24927) at dilution of 1:100. Blue: DAPI for nuclear staining.