

Anti-NBR1 antibody (STJ24692)

STJ24692

GENERAL INFORMATION

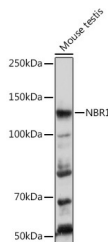
| | |
|--------------------------|---|
| Product Type | Primary antibodies |
| Short Description | Rabbit polyclonal antibody anti-NBR1 is suitable for use in Western Blot, Immunohistochemistry, Immunofluorescence and Immunoprecipitation. |
| Applications | WB, IHC, IF, IP |
| Host/Source | Rabbit |
| Reactivity | Human, Mouse, Rat, Monkey |

PRODUCT PROPERTIES

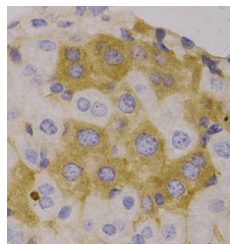
| | |
|----------------------------|--|
| Clonality | Polyclonal |
| Clone ID | |
| Concentration | |
| Conjugation | Unconjugated |
| Purification | Affinity purification |
| Dilution Range | WB 1:500-1:2000 IHC 1:50-1:200 IF 1:50-1:100 IP 1:20-1:50 |
| Formulation | PBS containing 0.02% Sodium Azide, 50% Glycerol, pH7.3. |
| Isotype | IgG |
| Storage Instruction | Store in a freezer at -20°C and avoid freeze-thaw cycles. |

TARGET INFORMATION

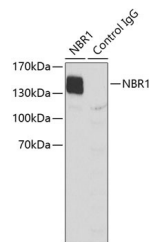
| | |
|---------------------------|-----------------------------------|
| Gene ID | 4077 |
| Gene Symbol | NBR1 |
| Uniprot ID | NBR1_HUMAN |
| Immunogen | Recombinant protein of human NBR1 |
| Immunogen Region | |
| Specificity | |
| Immunogen Sequence | |



Western blot analysis of extracts of mouse testis, using NBR1 rabbit polyclonal antibody (STJ24692) at 1:1000 dilution. Secondary antibody: HRP Goat Anti-rabbit IgG (H+L) at 1:10000 dilution. Lysates/proteins: 25ug per lane. Blocking buffer: 3% nonfat dry milk in TBST. Detection: ECL Basic Kit. Exposure time: 30s.



Immunohistochemistry of paraffin-embedded human liver, using NBR1 antibody (STJ24692).



Immunoprecipitation analysis of extracts of K562 cells, using NBR1 antibody (STJ24692).