

## Anti-MMP10 antibody (STJ24574)

STJ24574

### GENERAL INFORMATION

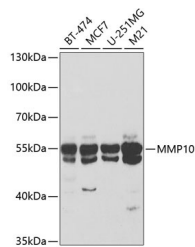
|                          |   |
|--------------------------|---|
| <b>Product Type</b>      | Primary antibodies  |
| <b>Short Description</b> | Rabbit polyclonal antibody anti-MMP10 is suitable for use in Western Blot, Immunohistochemistry and Immunofluorescence. |
| <b>Applications</b>      | WB, IHC, IF   |
| <b>Host/Source</b>       | Rabbit  |
| <b>Reactivity</b>        | Human, Mouse, Rat   |

### PRODUCT PROPERTIES

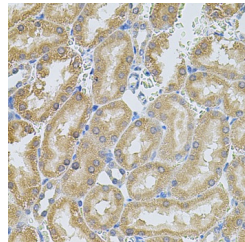
|                            |   |
|----------------------------|---|
| <b>Clonality</b>           | Polyclonal  |
| <b>Clone ID</b>            |   |
| <b>Concentration</b>       |   |
| <b>Conjugation</b>         | Unconjugated  |
| <b>Purification</b>        | Affinity purification                                     |
| <b>Dilution Range</b>      | WB 1:500-1:2000<br>IHC 1:50-1:200<br>IF 1:50-1:200        |
| <b>Formulation</b>         | PBS containing 0.02% Sodium Azide, 50% Glycerol, pH7.3.   |
| <b>Isotype</b>             | IgG   |
| <b>Storage Instruction</b> | Store in a freezer at -20°C and avoid freeze-thaw cycles. |

### TARGET INFORMATION

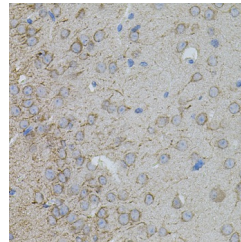
|                           |                                    |
|---------------------------|------------------------------------|
| <b>Gene ID</b>            | 4319                               |
| <b>Gene Symbol</b>        | MMP10                              |
| <b>Uniprot ID</b>         | MMP10_HUMAN                        |
| <b>Immunogen</b>          | A synthetic peptide of human MMP10 |
| <b>Immunogen Region</b>   |                                    |
| <b>Specificity</b>        |                                    |
| <b>Immunogen Sequence</b> |                                    |



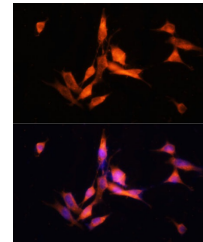
Western blot analysis of extracts of various cell lines, using MMP10 antibody (STJ24574) at 1:400 dilution. Secondary antibody: HRP Goat Anti-rabbit IgG (H+L) at 1:10000 dilution. Lysates/proteins: 25ug per lane. Blocking buffer: 3% nonfat dry milk in TBST.



Immunohistochemistry of paraffin-embedded rat kidney using MMP10 antibody (STJ24574) at dilution of 1:100 (40x lens).



Immunohistochemistry of paraffin-embedded mouse brain using MMP10 antibody (STJ24574) at dilution of 1:100 (40x lens).



Immunofluorescence analysis of NIH-3T3 cells using MMP10 Polyclonal Antibody (STJ24574) at dilution of 1:100 (40x lens). Blue: DAPI for nuclear staining.

This product is suitable for in-vitro studies under the RESEARCH USE ONLY [RUO] licence. This product must not be used as for diagnostic or other medical purposes.  
St John's Laboratory Ltd, Knowledge Dock Business Centre, University Way, London, E16 2RD | Tel: 0208 223 3081