

Anti-MCM6 antibody (562-821) (STJ24526)

STJ24526

GENERAL INFORMATION

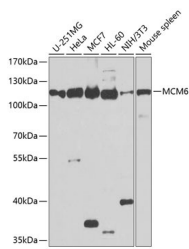
Product Type	Primary antibodies
Short Description	Rabbit polyclonal antibody anti-MCM6 (562-821) is suitable for use in Western Blot, Immunohistochemistry, Immunofluorescence and Immunoprecipitation.
Applications	WB, IHC, IF, IP
Host/Source	Rabbit
Reactivity	Human, Mouse, Rat

PRODUCT PROPERTIES

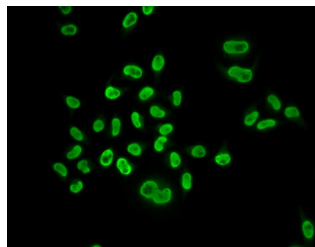
Clonality	Polyclonal
Clone ID	
Concentration	
Conjugation	Unconjugated
Purification	Affinity purification
Dilution Range	WB 1:500-1:2000 IHC 1:50-1:200 IF 1:50-1:200 IP 1:50-1:200
Formulation	PBS containing 0.02% Sodium Azide, 50% Glycerol, pH7.3.
Isotype	IgG
Storage	Store in a freezer at -20°C and avoid freeze-thaw cycles.
Instruction	

TARGET INFORMATION

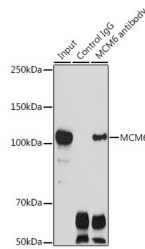
Gene ID	4175
Gene Symbol	MCM6
Uniprot ID	MCM6_HUMAN
Immunogen	Recombinant fusion protein containing a sequence corresponding to amino acids 562-821 of human MCM6 (NP_005906.2).
Immunogen Region	562-821
Specificity	
Immunogen Sequence	



Western blot analysis of extracts of various cell lines, using MCM6 antibody (STJ24526) at 1:1000 dilution. Secondary antibody: HRP Goat Anti-rabbit IgG (H+L) at 1:10000 dilution. Lysates/proteins: 25ug per lane. Blocking buffer: 3% nonfat dry milk in TBST. Detection: ECL Basic Kit. Exposure time: 10s.



Immunofluorescence analysis of U2OS cells using MCM6 antibody (STJ24526).



Immunoprecipitation analysis of 300ug extracts of HeLa cells using 3ug MCM6 antibody (STJ24526). Western blot was performed from the immunoprecipitate using MCM6 antibody (STJ24526) at a dilution of 1:1000.

This product is suitable for in-vitro studies under the RESEARCH USE ONLY [RUO] licence. This product must not be used as for diagnostic or other medical purposes.
St John's Laboratory Ltd, Knowledge Dock Business Centre, University Way, London, E16 2RD | Tel: 0208 223 3081