

Anti-MAP1B antibody (1820-2100) (STJ24455)

STJ24455

GENERAL INFORMATION

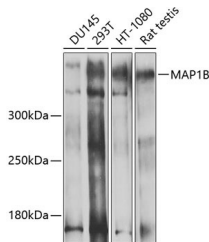
Product Type	Primary antibodies
Short Description	Rabbit polyclonal antibody anti-MAP1B (1820-2100) is suitable for use in Western Blot, Immunohistochemistry and Immunofluorescence.
Applications	WB, IHC, IF
Host/Source	Rabbit
Reactivity	Human, Mouse, Rat

PRODUCT PROPERTIES

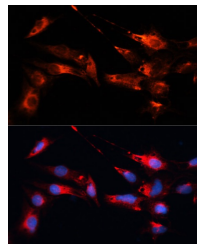
Clonality	Polyclonal
Clone ID	
Concentration	
Conjugation	Unconjugated
Purification	Affinity purification
Dilution Range	WB 1:200-1:2000 IHC 1:50-1:200 IF 1:50-1:200
Formulation	PBS containing 0.02% Sodium Azide, 50% Glycerol, pH7.3.
Isotype	IgG
Storage Instruction	Store in a freezer at -20°C and avoid freeze-thaw cycles.

TARGET INFORMATION

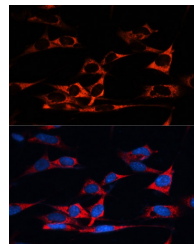
Gene ID	4131
Gene Symbol	MAP1B
Uniprot ID	MAP1B_HUMAN
Immunogen	Recombinant fusion protein containing a sequence corresponding to amino acids 1820-2100 of human MAP1B (NP_005900.2).
Immunogen Region	1820-2100
Specificity	
Immunogen Sequence	



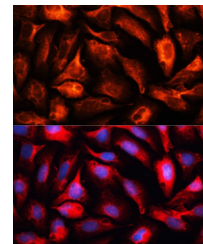
Western blot analysis of extracts of various cell lines, using MAP1B antibody (STJ24455) at 1:1000 dilution. Secondary antibody: HRP Goat Anti-rabbit IgG (H+L) at 1:10000 dilution. Lysates/proteins: 25µg per lane. Blocking buffer: 3% nonfat dry milk in TBST. Detection: ECL Basic Kit. Exposure time: 1s.



Immunofluorescence analysis of C6 cells using MAP1B antibody (STJ24455) at dilution of 1:100. Blue: DAPI for nuclear staining.



Immunofluorescence analysis of NIH/3T3 cells using MAP1B antibody (STJ24455) at dilution of 1:100. Blue: DAPI for nuclear staining.



Immunofluorescence analysis of U2OS cells using MAP1B antibody (STJ24455) at dilution of 1:100. Blue: DAPI for nuclear staining.