

Anti-MAD1L1 antibody (360-700) (STJ24440)

STJ24440

GENERAL INFORMATION

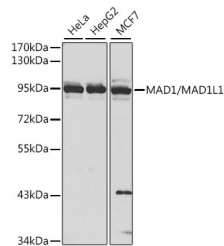
Product Type	Primary antibodies
Short Description	Rabbit polyclonal antibody anti-MAD1L1 (360-700) is suitable for use in Western Blot, Immunohistochemistry and Immunofluorescence.
Applications	WB, IHC, IF
Host/Source	Rabbit
Reactivity	Human, Mouse

PRODUCT PROPERTIES

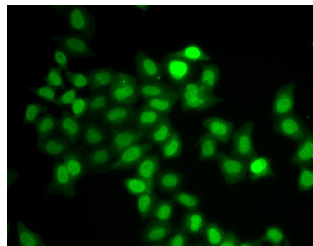
Clonality	Polyclonal
Clone ID	
Concentration	
Conjugation	Unconjugated
Purification	Affinity purification
Dilution Range	WB 1:500-1:2000 IHC 1:50-1:200 IF 1:50-1:200
Formulation	PBS containing 0.02% Sodium Azide, 50% Glycerol, pH7.3.
Isotype	IgG
Storage Instruction	Store in a freezer at -20°C and avoid freeze-thaw cycles.

TARGET INFORMATION

Gene ID	8379
Gene Symbol	MAD1L1
Uniprot ID	MD1L1_HUMAN
Immunogen	Recombinant fusion protein containing a sequence corresponding to amino acids 360-700 of human MAD1/MAD1/MAD1L1 (NP_001013859.1).
Immunogen Region	360-700
Specificity	
Immunogen Sequence	



Western blot analysis of extracts of various cell lines, using MAD1/MAD1/MAD1L1 antibody (STJ24440) at 1:1000 dilution. Secondary antibody: HRP Goat Anti-rabbit IgG (H+L) at 1:10000 dilution. Lysates/proteins: 25µg per lane. Blocking buffer: 3% nonfat dry milk in TBST. Detection: ECL Basic Kit.



Immunofluorescence analysis of U2OS cells using MAD1/MAD1/MAD1L1 antibody (STJ24440).