

Anti-KRT20 antibody (245-424) (STJ24356)

STJ24356

GENERAL INFORMATION

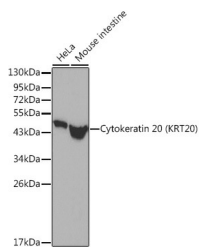
Product Type	Primary antibodies
Short Description	Rabbit polyclonal antibody anti-KRT20 (245-424) is suitable for use in Western Blot, Immunohistochemistry and Immunofluorescence.
Applications	WB, IHC, IF
Host/Source	Rabbit
Reactivity	Human, Mouse

PRODUCT PROPERTIES

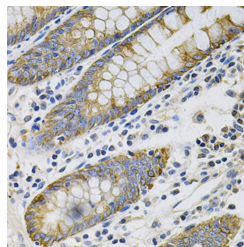
Clonality	Polyclonal
Clone ID	
Concentration	
Conjugation	Unconjugated
Purification	Affinity purification
Dilution Range	WB 1:500-1:2000 IHC 1:50-1:200 IF 1:50-1:200
Formulation	PBS containing 0.02% Sodium Azide, 50% Glycerol, pH7.3.
Isotype	IgG
Storage	Store in a freezer at -20°C and avoid freeze-thaw cycles.
Instruction	

TARGET INFORMATION

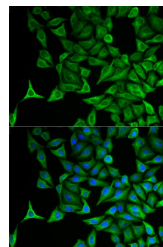
Gene ID	54474
Gene Symbol	KRT20
Uniprot ID	K1C20_HUMAN
Immunogen	Recombinant fusion protein containing a sequence corresponding to amino acids 245-424 of human Cytokeratin 20 (Cytokeratin 20 (KRT20)) (NP_061883.1).
Immunogen Region	245-424
Specificity	
Immunogen Sequence	



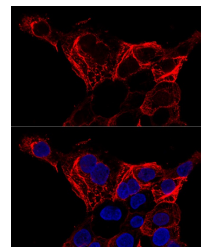
Western blot analysis of extracts of various cell lines, using Cytokeratin 20 (Cytokeratin 20 (KRT20)) antibody (STJ24356). Secondary antibody: HRP Goat Anti-rabbit IgG (H+L) at 1:10000 dilution. Lysates/proteins: 25ug per lane. Blocking buffer: 3% nonfat dry milk in TBST.



Immunohistochemistry of paraffin-embedded Human colon using Cytokeratin 20 (Cytokeratin 20 (KRT20)) antibody (STJ24356) at dilution of 1:100 (40x lens).



Immunofluorescence analysis of HeLa cells using Cytokeratin 20 (Cytokeratin 20 (KRT20)) antibody (STJ24356). Blue: DAPI for nuclear staining.



Confocal immunofluorescence analysis of A-431 cells using Cytokeratin 20 (Cytokeratin 20 (KRT20)) antibody (STJ24356) at dilution of 1:200. Blue: DAPI for nuclear staining.

This product is suitable for in-vitro studies under the RESEARCH USE ONLY [RUO] licence. This product must not be used as for diagnostic or other medical purposes.
St John's Laboratory Ltd, Knowledge Dock Business Centre, University Way, London, E16 2RD | Tel: 0208 223 3081