

Anti-KLK3 antibody (1-100) (STJ24333)

STJ24333

GENERAL INFORMATION

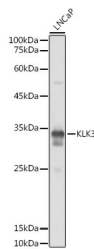
Product Type	Primary antibodies
Short Description	Rabbit polyclonal antibody anti-KLK3 (1-100) is suitable for use in Western Blot, Immunohistochemistry, Immunofluorescence and Immunoprecipitation.
Applications	WB, IHC, IF, IP
Host/Source	Rabbit
Reactivity	Human

PRODUCT PROPERTIES

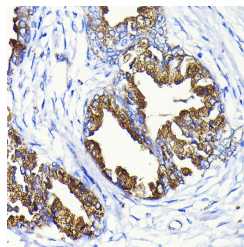
Clonality	Polyclonal
Clone ID	
Concentration	
Conjugation	Unconjugated
Purification	Affinity purification
Dilution Range	WB 1:500-1:2000 IHC 1:50-1:100 IF 1:50-1:200 IP 1:50-1:200
Formulation	PBS containing 0.02% Sodium Azide, 50% Glycerol, pH7.3.
Isotype	IgG
Storage Instruction	Store in a freezer at -20°C and avoid freeze-thaw cycles.

TARGET INFORMATION

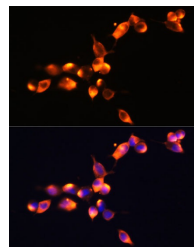
Gene ID	354
Gene Symbol	KLK3
Uniprot ID	KLK3_HUMAN
Immunogen	A synthetic peptide corresponding to a sequence within amino acids 1-100 of human KLK3 (NP_001639.1).
Immunogen Region	1-100
Specificity	
Immunogen Sequence	



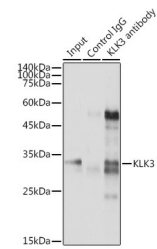
Western blot analysis of extracts of LNCaP cells, using KLK3 antibody (STJ24333) at 1:1000 dilution. Secondary antibody: HRP Goat Anti-rabbit IgG (H+L) at 1:10000 dilution. Lysates/proteins: 25ug per lane. Blocking buffer: 3% nonfat dry milk in TBST. Detection: ECL Basic Kit. Exposure time: 1s.



Immunohistochemistry of paraffin-embedded human prostate cancer using KLK3 rabbit polyclonal antibody (STJ24333) at dilution of 1:100 (40x lens).



Immunofluorescence analysis of LNCaP cells using KLK3 Polyclonal Antibody (STJ24333) at dilution of 1:100 (40x lens). Blue: DAPI for nuclear staining.



Immunoprecipitation analysis of 300ug extracts of LNCaP cells using 3ug KLK3 antibody (STJ24333). Western blot was performed from the immunoprecipitate using KLK3 antibody (STJ24333) at a dilution of 1:2000.

This product is suitable for in-vitro studies under the RESEARCH USE ONLY [RUO] licence. This product must not be used as for diagnostic or other medical purposes.
St John's Laboratory Ltd, Knowledge Dock Business Centre, University Way, London, E16 2RD | Tel: 0208 223 3081