

Anti-IL2 antibody (21-153) (STJ24180)

STJ24180

GENERAL INFORMATION

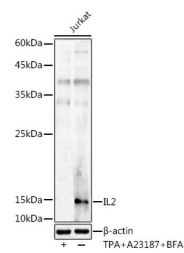
| | |
|--------------------------|--|
| Product Type | Primary antibodies |
| Short Description | Rabbit polyclonal antibody anti-IL2 (21-153) is suitable for use in Western Blot and Immunohistochemistry. |
| Applications | WB, IHC |
| Host/Source | Rabbit |
| Reactivity | Human |

PRODUCT PROPERTIES

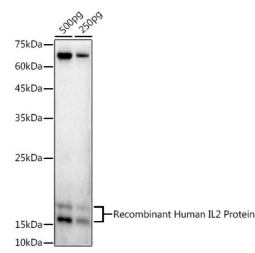
| | |
|----------------------------|---|
| Clonality | Polyclonal |
| Clone ID | |
| Concentration | |
| Conjugation | Unconjugated |
| Purification | Affinity purification |
| Dilution Range | WB 1:500-1:2000 IHC 1:50-1:100 |
| Formulation | PBS containing 0.02% Sodium Azide, 50% Glycerol, pH7.3. |
| Isotype | IgG |
| Storage Instruction | Store in a freezer at -20°C and avoid freeze-thaw cycles. |

TARGET INFORMATION

| | |
|---------------------------|--|
| Gene ID | 3558 |
| Gene Symbol | IL2 |
| Uniprot ID | IL2_HUMAN |
| Immunogen | Recombinant fusion protein containing a sequence corresponding to amino acids 21-153 of human IL2 (NP_000577.2). |
| Immunogen Region | 21-153 |
| Specificity | |
| Immunogen Sequence | |



Western blot analysis of extracts of Jurkat cells, using IL2 antibody (STJ24180) at 1:1000 dilution. Jurkat cells were treated by TPA (40 nM), A23187 (2 μM) and Brefeldin A (300 ng/ml) for 0-24 hours. Secondary antibody: HRP Goat Anti-rabbit IgG (H+L) at 1:10000 dilution. Lysates/proteins: 25 μg per lane. Blocking buffer: 3% nonfat dry milk in TBST. Detection: ECL Enhanced Kit. Exposure time: 180s.



Western blot analysis of extracts of Recombinant Human IL2 Protein, using IL2 antibody (STJ24180) at 1:1000 dilution. Secondary antibody: HRP Goat Anti-rabbit IgG (H+L) at 1:10000 dilution. Lysates/proteins: 25 μg per lane. Blocking buffer: 3% nonfat dry milk in TBST. Detection: ECL Enhanced Kit. Exposure time: 180s.

This product is suitable for in-vitro studies under the RESEARCH USE ONLY [RUO] licence. This product must not be used as for diagnostic or other medical purposes.
St John's Laboratory Ltd, Knowledge Dock Business Centre, University Way, London, E16 2RD | Tel: 0208 223 3081