

Anti-IKBKE antibody (495-716) (STJ24153)

STJ24153

GENERAL INFORMATION

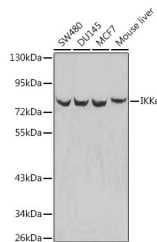
| | |
|--------------------------|---|
| Product Type | Primary antibodies |
| Short Description | Rabbit polyclonal antibody anti-IKK Epsilon (495-716) is suitable for use in Western Blot, Immunohistochemistry and Immunofluorescence. |
| Applications | WB, IHC, IF |
| Host/Source | Rabbit |
| Reactivity | Human, Mouse, Rat |

PRODUCT PROPERTIES

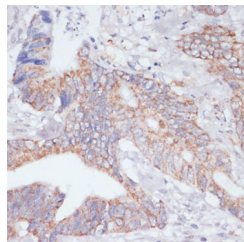
| | |
|----------------------------|---|
| Clonality | Polyclonal |
| Clone ID | |
| Concentration | |
| Conjugation | Unconjugated |
| Purification | Affinity purification |
| Dilution Range | WB 1:500-1:2000 IHC 1:50-1:200 IF 1:50-1:200 |
| Formulation | PBS containing 0.02% Sodium Azide, 50% Glycerol, pH7.3. |
| Isotype | IgG |
| Storage Instruction | Store in a freezer at -20°C and avoid freeze-thaw cycles. |

TARGET INFORMATION

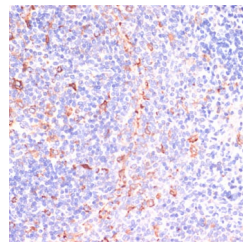
| | |
|---------------------------|---|
| Gene ID | 9641 |
| Gene Symbol | IKBKE |
| Uniprot ID | IKKE_HUMAN |
| Immunogen | Recombinant fusion protein containing a sequence corresponding to amino acids 495-716 of human IKK Epsilon (NP_054721.1). |
| Immunogen Region | 495-716 |
| Specificity | |
| Immunogen Sequence | |



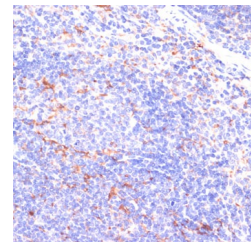
Western blot analysis of extracts of various cell lines, using IKK Epsilon antibody (STJ24153). Secondary antibody: HRP Goat Anti-rabbit IgG (H+L) at 1:10000 dilution. Lysates/proteins: 25ug per lane. Blocking buffer: 3% nonfat dry milk in TBST.



Immunohistochemistry of paraffin-embedded human colon carcinoma using IKK Epsilon antibody (STJ24153) at dilution of 1:200 (40x lens). Perform microwave antigen retrieval with 10 mM PBS buffer pH 7.2 before commencing with immunohistochemistry staining protocol.



Immunohistochemistry of paraffin-embedded rat spleen using IKK Epsilon antibody (STJ24153) at dilution of 1:200 (40x lens). Perform microwave antigen retrieval with 10 mM PBS buffer pH 7.2 before commencing with immunohistochemistry staining protocol.



Immunohistochemistry of paraffin-embedded mouse spleen using IKK Epsilon antibody (STJ24153) at dilution of 1:200 (40x lens). Perform microwave antigen retrieval with 10 mM PBS buffer pH 7.2 before commencing with immunohistochemistry staining protocol.