

Anti-IFNA1 antibody (25-155) (STJ24129)

STJ24129

GENERAL INFORMATION

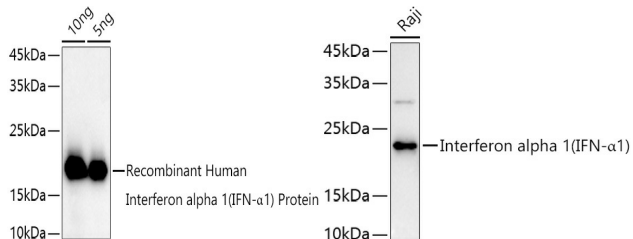
Product Type	Primary antibodies
Short Description	Rabbit polyclonal antibody anti-IFNA1 (25-155) is suitable for use in Western Blot and Immunofluorescence.
Applications	WB, IF
Host/Source	Rabbit
Reactivity	Human, Mouse, Rat

PRODUCT PROPERTIES

Clonality	Polyclonal
Clone ID	
Concentration	
Conjugation	Unconjugated
Purification	Affinity purification
Dilution Range	WB 1:500-1:2000 IF 1:100-1:200
Formulation	PBS containing 0.02% Sodium Azide, 50% Glycerol, pH7.3.
Isotype	IgG
Storage Instruction	Store in a freezer at -20°C and avoid freeze-thaw cycles.

TARGET INFORMATION

Gene ID	3439/3447
Gene Symbol	IFNA1,IFNA13
Uniprot ID	IFNA1_HUMAN
Immunogen	Recombinant fusion protein containing a sequence corresponding to amino acids 25-155 of human IFNA1 (NP_076918.1).
Immunogen Region	25-155
Specificity	
Immunogen Sequence	



Western blot analysis of extracts of Recombinant Human Interferon alpha 1 (IFN-Alpha 1) Protein, using Interferon alpha 1 (IFN-Alpha 1) antibody (STJ24129) at 1:1000 dilution. Secondary antibody: HRP Goat Anti-rabbit IgG (H+L) at 1:10000 dilution. Lysates/proteins: 25ug per lane. Blocking buffer: 3% nonfat dry milk in TBST. Detection: ECL Basic Kit. Exposure time: 30s.

Western blot analysis of extracts of Raji cells, using Interferon alpha 1 (IFN-Alpha 1) antibody (STJ24129) at 1:1000 dilution. Secondary antibody: HRP Goat Anti-rabbit IgG (H+L) at 1:10000 dilution. Lysates/proteins: 25ug per lane. Blocking buffer: 3% nonfat dry milk in TBST. Detection: ECL Basic Kit. Exposure time: 180s.

This product is suitable for in-vitro studies under the RESEARCH USE ONLY [RUO] licence. This product must not be used as for diagnostic or other medical purposes.
St John's Laboratory Ltd, Knowledge Dock Business Centre, University Way, London, E16 2RD | Tel: 0208 223 3081