

Anti-HSPB8 antibody (STJ24102)

STJ24102

GENERAL INFORMATION

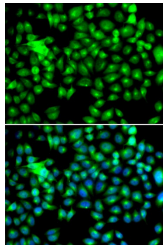
Product Type	Primary antibodies
Short Description	Rabbit polyclonal anti-HSPB8 antibody is suitable for use in Western Blot, Immunohistochemistry and Immunofluorescence.
Background	
Applications	WB, IHC, IF
Host/Source	Rabbit
Reactivity	Human, Mouse, Rat

PRODUCT PROPERTIES

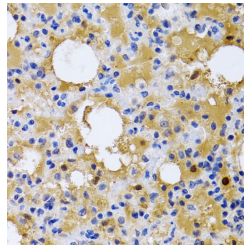
Clonality	Polyclonal
Clone ID	
Concentration	
Conjugation	Unconjugated
Purification	Affinity purification
Dilution Range	WB: 1:500-1:2000 IHC: 1:50-1:200 IF: 1:50-1:100
Formulation	PBS with 0.02% sodium azide, 50% glycerol, pH7.3.
Isotype	IgG
Storage Instruction	Store at -20°C. Avoid freeze/thaw cycles.

TARGET INFORMATION

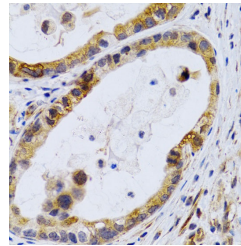
Gene ID	26353
Gene Symbol	HSPB8
Uniprot ID	HSPB8_HUMAN
Immunogen	Recombinant fusion protein containing a sequence corresponding to amino acids 1-196 of human HSPB8 (NP_055180.1).
Immunogen Region	
Specificity	
Immunogen Sequence	



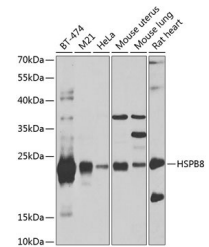
Immunofluorescence analysis of HeLa cells using HSPB8 antibody (STJ24102). Blue: DAPI for nuclear staining.



Immunohistochemistry of paraffin-embedded rat lung using HSPB8 antibody (STJ24102) at dilution of 1:200 (40x lens).



Immunohistochemistry of paraffin-embedded human gastric cancer using HSPB8 antibody (STJ24102) at dilution of 1:200 (40x lens).



Western blot analysis of extracts of various cell lines, using HSPB8 antibody (STJ24102) at 1:1000 dilution. Secondary antibody: HRP-Goat Anti-Rabbit IgG (H+L) at 1:10000 dilution. Lysates/proteins: 25ug per lane. Blocking buffer: 3% nonfat dry milk in TBST. Detection: ECL-Enhanced kit. Exposure time: 10s.

This product is suitable for in-vitro studies under the RESEARCH USE ONLY [RUO] licence. This product must not be used as for diagnostic or other medical purposes.
St John's Laboratory Ltd, Knowledge Dock Business Centre, University Way, London, E16 2RD | Tel: 0208 223 3081 | Fax: 0207 681 2580