

## Anti-HSPA1A antibody (C-Term) (STJ24091)

STJ24091

### GENERAL INFORMATION

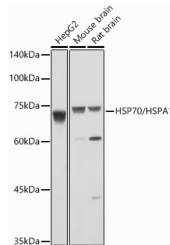
|                          |   |
|--------------------------|---|
| <b>Product Type</b>      | Primary antibodies  |
| <b>Short Description</b> | Rabbit polyclonal antibody anti-HSP70 (C-Term) is suitable for use in Western Blot, Immunohistochemistry, Immunofluorescence and Immunoprecipitation. |
| <b>Applications</b>      | WB, IHC, IF, IP   |
| <b>Host/Source</b>       | Rabbit  |
| <b>Reactivity</b>        | Human, Mouse, Rat   |

### PRODUCT PROPERTIES

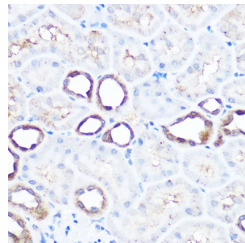
|                       |   |
|-----------------------|---|
| <b>Clonality</b>      | Polyclonal  |
| <b>Clone ID</b>       |   |
| <b>Concentration</b>  |   |
| <b>Conjugation</b>    | Unconjugated  |
| <b>Purification</b>   | Affinity purification   |
| <b>Dilution Range</b> | WB 1:500-1:2000<br>IHC 1:50-1:200<br>IF 1:50-1:200<br>IP 1:50-1:100 |
| <b>Formulation</b>    | PBS containing 0.02% Sodium Azide, 50% Glycerol, pH7.3.             |
| <b>Isotype</b>        | IgG   |
| <b>Storage</b>        | Store in a freezer at -20°C and avoid freeze-thaw cycles.           |
| <b>Instruction</b>    |   |

### TARGET INFORMATION

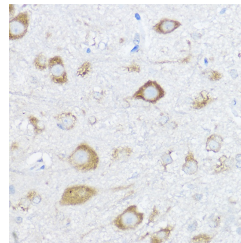
|                           |  |
|---------------------------|--|
| <b>Gene ID</b>            | 3303/3304  |
| <b>Gene Symbol</b>        | HSPA1A   |
| <b>Uniprot ID</b>         | HS71A_HUMAN  |
| <b>Immunogen</b>          | A synthetic peptide corresponding to a sequence within amino acids 540 to the C-terminus of human HSP70/HSPA1 (NP_005336.3). |
| <b>Immunogen Region</b>   | C-Term   |
| <b>Specificity</b>        |  |
| <b>Immunogen Sequence</b> |  |



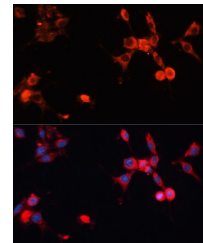
Western blot analysis of extracts of various cell lines, using HSP70/HSPA1 antibody (STJ24091) at 1:1000 dilution. Secondary antibody: HRP Goat Anti-rabbit IgG (H+L) at 1:10000 dilution. Lysates/proteins: 25ug per lane. Blocking buffer: 3% nonfat dry milk in TBST. Detection: ECL Basic Kit. Exposure time: 10s.



Immunohistochemistry of paraffin-embedded rat kidney using HSP70/HSPA1 rabbit polyclonal antibody (STJ24091) at dilution of 1:100 (40x lens). Perform high pressure antigen retrieval with 10 mM citrate buffer pH 6.0 before commencing with immunohistochemistry staining protocol.



Immunohistochemistry of paraffin-embedded mouse spinal cord using HSP70/HSPA1 rabbit polyclonal antibody (STJ24091) at dilution of 1:100 (40x lens). Perform high pressure antigen retrieval with 10 mM citrate buffer pH 6.0 before commencing with immunohistochemistry staining protocol.



Immunofluorescence analysis of NIH/3T3 cells using HSP70/HSPA1 antibody (STJ24091) at dilution of 1:100. Blue: DAPI for nuclear staining.

This product is suitable for in-vitro studies under the RESEARCH USE ONLY [RUO] licence. This product must not be used as for diagnostic or other medical purposes.  
St John's Laboratory Ltd, Knowledge Dock Business Centre, University Way, London, E16 2RD | Tel: 0208 223 3081