

Anti-Di-Methyl-Histone H3-R8 antibody (Around R8) (STJ24013)

STJ24013

GENERAL INFORMATION

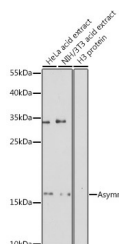
Product Type	Primary antibodies
Short Description	Rabbit polyclonal antibody anti-Di-Methyl-Asymmetric Histone H3-R8 (Around R8) is suitable for use in Western Blot, Immunohistochemistry and Immunofluorescence.
Applications	WB, IHC, IF
Host/Source	Rabbit
Reactivity	Human, Mouse, Rat

PRODUCT PROPERTIES

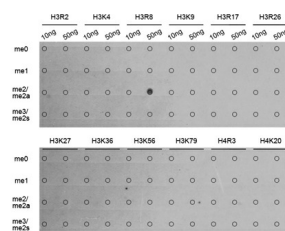
Clonality	Polyclonal
Clone ID	
Concentration	
Conjugation	Unconjugated
Purification	Affinity purification
Dilution Range	WB 1:500-1:2000 IHC 1:50-1:200 IF 1:50-1:200
Formulation	PBS containing 0.02% Sodium Azide, 50% Glycerol, pH7.3.
Isotype	IgG
Storage	Store in a freezer at -20°C and avoid freeze-thaw cycles.
Instruction	

TARGET INFORMATION

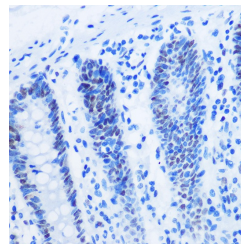
Gene ID	8290
Gene Symbol	H3-4
Uniprot ID	H31T_HUMAN
Immunogen	A synthetic methylated peptide corresponding to residues surrounding R8 of human histone H3
Immunogen Region	Around R8
Specificity	
Immunogen Sequence	



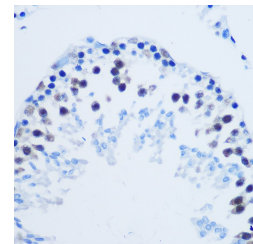
Western blot analysis of extracts of various cell lines, using Asymmetric DiMethyl-Histone H3-R8 antibody (STJ24013) at 1:500 dilution. Secondary antibody: HRP Goat Anti-rabbit IgG (H+L) at 1:10000 dilution. Lysates/proteins: 25µg per lane. Blocking buffer: 3% nonfat dry milk in TBST. Detection: ECL Basic Kit. Exposure time: 180s.



Dot-blot analysis of all sorts of methylation peptides using Asymmetric DiMethyl-Histone H3-R8 antibody (STJ24013).



Immunohistochemistry of paraffin-embedded Human colon using Asymmetric DiMethyl-Histone H3-R8 rabbit polyclonal antibody (STJ24013) at dilution of 1:100 (40x lens).



Immunohistochemistry of paraffin-embedded Rat testis using Asymmetric DiMethyl-Histone H3-R8 rabbit polyclonal antibody (STJ24013) at dilution of 1:100 (40x lens).