

Anti-Di-Methyl-Histone H3-K36 antibody (Around K36) (STJ23991)

STJ23991

GENERAL INFORMATION

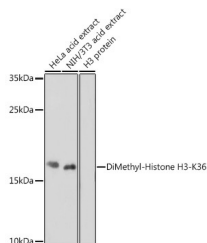
Product Type	Primary antibodies
Short Description	Rabbit polyclonal antibody anti-Di-Methyl-Histone H3-K36 (Around K36) is suitable for use in Western Blot, Immunohistochemistry, Immunofluorescence and Immunoprecipitation.
Applications	WB, IHC, IF, IP
Host/Source	Rabbit
Reactivity	Human, Mouse, Rat

PRODUCT PROPERTIES

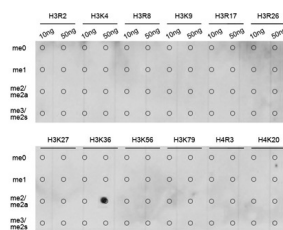
Clonality	Polyclonal
Clone ID	
Concentration	
Conjugation	Unconjugated
Purification	Affinity purification
Dilution Range	WB 1:500-1:2000 IHC 1:50-1:200 IF 1:50-1:200 IP 1:50-1:200 ChIP 1:20-1:100 ChIP-seq 1:20-1:100
Formulation	PBS containing 0.02% Sodium Azide, 50% Glycerol, pH7.3.
Isotype	IgG
Storage Instruction	Store in a freezer at -20°C and avoid freeze-thaw cycles.

TARGET INFORMATION

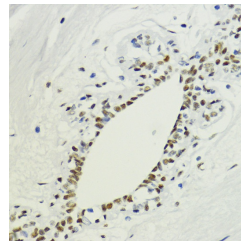
Gene ID	8290
Gene Symbol	H3-4
Uniprot ID	H31T_HUMAN
Immunogen	A synthetic methylated peptide corresponding to residues surrounding K36 of human histone H3
Immunogen Region	Around K36
Specificity	
Immunogen Sequence	



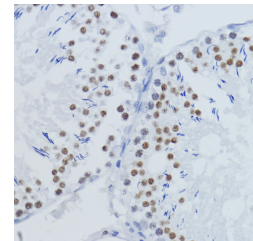
Western blot analysis of extracts of various cell lines, using DiMethyl-Histone H3-K36 antibody (STJ23991) at 1:1000 dilution. Secondary antibody: HRP Goat Anti-rabbit IgG (H+L) at 1:10000 dilution. Lysates/proteins: 25µg per lane. Blocking buffer: 3% nonfat dry milk in TBST. Detection: ECL Basic Kit. Exposure time: 180s.



Dot-blot analysis of all sorts of methylation peptides using DiMethyl-Histone H3-K36 antibody (STJ23991).



Immunohistochemistry of paraffin-embedded human breast using DiMethyl-Histone H3-K36 antibody (STJ23991) at dilution of 1:200 (40x lens).



Immunohistochemistry of paraffin-embedded rat testis using DiMethyl-Histone H3-K36 antibody (STJ23991) at dilution of 1:200 (40x lens).