

Anti-Mono-Methyl-H3K27me1-K27 antibody (STJ23987)

STJ23987

GENERAL INFORMATION

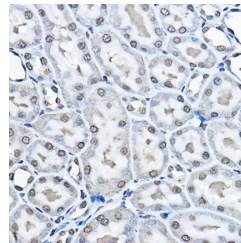
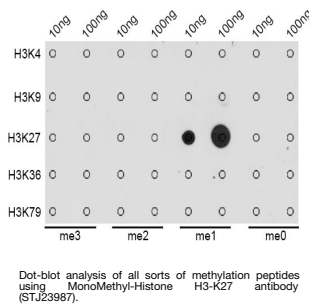
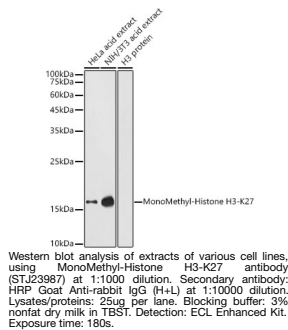
Product Type	Primary antibodies
Short Description	Rabbit polyclonal antibody anti-Mono-Methyl-Histone H3-K27 is suitable for use in Western Blot, Immunohistochemistry, Immunofluorescence and Immunoprecipitation.
Applications	WB, IHC, IF, IP
Host/Source	Rabbit
Reactivity	Human, Mouse, Rat

PRODUCT PROPERTIES

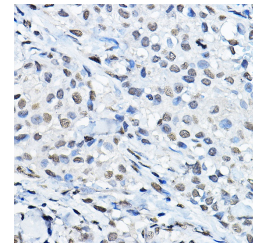
Clonality	Polyclonal
Clone ID	
Concentration	
Conjugation	Unconjugated
Purification	Affinity purification
Dilution Range	WB 1:500-1:2000 IHC 1:50-1:200 IF 1:50-1:200 IP 1:50-1:200 ChIP 1:20-1:100 ChIP-seq 1:20-1:100
Formulation	PBS containing 0.02% Sodium Azide, 50% Glycerol, pH7.3.
Isotype	IgG
Storage	Store in a freezer at -20°C and avoid freeze-thaw cycles.
Instruction	

TARGET INFORMATION

Gene ID	8350/8351/8352/8353/8354/8355/8356/8357/8358/8968
Gene Symbol	H3C1.H3C2.H3C3.H3C4.H3C6.H3C7.H3C8.H3C10.H3C11.H3C12
Uniprot ID	H31_HUMAN
Immunogen	A synthetic methylated peptide corresponding to residues surrounding K27 of human histone H3
Immunogen Region	
Specificity	
Immunogen Sequence	



Immunohistochemistry of paraffin-embedded rat kidney using MonoMethyl-Histone H3-K27 rabbit polyclonal antibody (STJ23987) at dilution of 1:100 (40x lens). Perform high pressure antigen retrieval with 10 mM citrate buffer pH 6.0 before commencing with immunohistochemistry staining protocol.



Immunohistochemistry of paraffin-embedded human breast cancer using MonoMethyl-Histone H3-K27 rabbit polyclonal antibody (STJ23987) at dilution of 1:100 (40x lens). Perform high pressure antigen retrieval with 10 mM citrate buffer pH 6.0 before commencing with immunohistochemistry staining protocol.

This product is suitable for in-vitro studies under the RESEARCH USE ONLY [RUO] licence. This product must not be used as for diagnostic or other medical purposes.
St John's Laboratory Ltd, Knowledge Dock Business Centre, University Way, London, E16 2RD | Tel: 0208 223 3081