

## Anti-Di-Methyl-Histone H4-R3 antibody (STJ23979)

STJ23979

### GENERAL INFORMATION

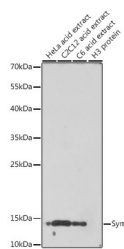
<b>Product Type</b>	Primary antibodies
<b>Short Description</b>	Rabbit polyclonal antibody anti-Di-Methyl-Symmetric Histone H4-R3 is suitable for use in Western Blot, Immunohistochemistry and Immunofluorescence.
<b>Applications</b>	WB, IHC, IF
<b>Host/Source</b>	Rabbit
<b>Reactivity</b>	Human, Mouse, Rat

### PRODUCT PROPERTIES

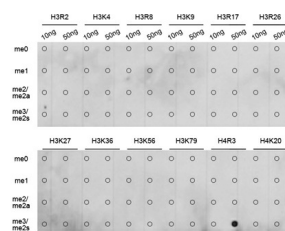
<b>Clonality</b>	Polyclonal
<b>Clone ID</b>	
<b>Concentration</b>	
<b>Conjugation</b>	Unconjugated
<b>Purification</b>	Affinity purification
<b>Dilution Range</b>	WB 1:500-1:2000 IHC 1:50-1:200 IF 1:50-1:200
<b>Formulation</b>	PBS containing 0.02% Sodium Azide, 50% Glycerol, pH7.3.
<b>Isotype</b>	IgG
<b>Storage</b>	Store in a freezer at -20°C and avoid freeze-thaw cycles.
<b>Instruction</b>	

### TARGET INFORMATION

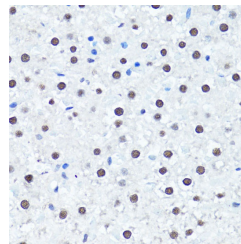
<b>Gene ID</b>	121504/554313/8294/8359/8360/8361/8362/8363/8364/8365/8366/8367/8368/8370
<b>Gene Symbol</b>	H4C1.H4C2.H4C3.H4C4.H4C5.H4C6.H4C8.H4C9.H4C11.H4C12.H4C13.H4C14.H4C15.H4-16
<b>Uniprot ID</b>	H4_HUMAN
<b>Immunogen</b>	A synthetic peptide of human Symmetric DiMethyl-Histone H4-R3
<b>Immunogen Region</b>	
<b>Specificity</b>	
<b>Immunogen Sequence</b>	



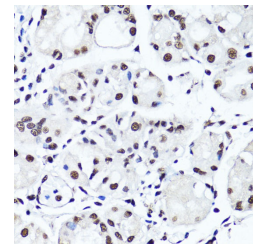
Western blot analysis of extracts of various cell lines, using Symmetric DiMethyl-Histone H4-R3 antibody (STJ23979) at 1:1000 dilution. Secondary antibody: HRP-Goat Anti-rabbit IgG (H+L) at 1:10000 dilution. Lysates/proteins: 25ug per lane. Blocking buffer: 3% nonfat dry milk in TBST. Detection: ECL Basic Kit. Exposure time: 90s.



Dot-blot analysis of all sorts of methylation peptides using Symmetric DiMethyl-Histone H4-R3 antibody (STJ23979).



Immunohistochemistry of paraffin-embedded rat liver using Symmetric DiMethyl-Histone H4-R3 antibody (STJ23979) at dilution of 1:100 (40x lens).



Immunohistochemistry of paraffin-embedded human stomach using Symmetric DiMethyl-Histone H4-R3 antibody (STJ23979) at dilution of 1:100 (40x lens).

This product is suitable for in-vitro studies under the RESEARCH USE ONLY [RUO] licence. This product must not be used as for diagnostic or other medical purposes.  
St John's Laboratory Ltd, Knowledge Dock Business Centre, University Way, London, E16 2RD | Tel: 0208 223 3081