

Anti-Di-Methyl-Histone H4-K20 antibody (Around K20) (STJ23971)

STJ23971

GENERAL INFORMATION

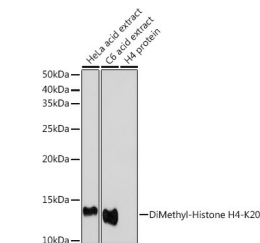
Product Type	Primary antibodies
Short Description	Rabbit polyclonal antibody anti-Di-Methyl-Histone H4-K20 (Around K20) is suitable for use in Western Blot, Immunohistochemistry, Immunofluorescence and Immunoprecipitation.
Applications	WB, IHC, IF, IP
Host/Source	Rabbit
Reactivity	Human, Mouse, Rat

PRODUCT PROPERTIES

Clonality	Polyclonal
Clone ID	
Concentration	
Conjugation	Unconjugated
Purification	Affinity purification
Dilution Range	WB 1:500-1:2000 IHC 1:50-1:200 IF 1:50-1:200 IP 1:50-1:200 ChIP 1:20-1:100 ChIP-seq 1:20-1:100
Formulation	PBS containing 0.02% Sodium Azide, 50% Glycerol, pH7.3.
Isotype	IgG
Storage Instruction	Store in a freezer at -20°C and avoid freeze-thaw cycles.

TARGET INFORMATION

Gene ID	121504/554313/8294/8359/8360/8361/8362/8363/8364/8365/8366/8367/8368/8370
Gene Symbol	H4C1.H4C2.H4C3.H4C4.H4C5.H4C6.H4C8.H4C9.H4C11.H4C12.H4C13.H4C14.H4C15.H4-16
Uniprot ID	H4_HUMAN
Immunogen	A synthetic methylated peptide corresponding to residues surrounding K20 of human histone H4
Immunogen Region	Around K20
Specificity	
Immunogen Sequence	

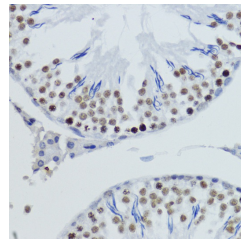


Western blot analysis of extracts of various cell lines, using DiMethyl-Histone H4-K20 antibody (STJ23971) at 1:1000 dilution. Secondary antibody: HRP Goat Anti-rabbit IgG (H+L) at 1:10000 dilution. Lysates/proteins: 25µg per lane. Blocking buffer: 3% nonfat dry milk in TBST. Detection: ECL Basic Kit. Exposure time: 30s.

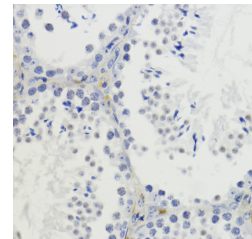
	H3R2	H3K4	H3R8	H3K9	H3R17	H3R26
me0	○	○	○	○	○	○
me1	○	○	○	○	○	○
me2	○	○	○	○	○	○
me3	○	○	○	○	○	○

	H3K27	H3K36	H3K36	H3K79	H4R3	H4K20
me0	○	○	○	○	○	○
me1	○	○	○	○	○	○
me2	○	○	○	○	○	○
me3	○	○	○	○	○	○

Dot-blot analysis of all sorts of methylation peptides using DiMethyl-Histone H4-K20 antibody (STJ23971).



Immunohistochemistry of paraffin-embedded rat testis using DiMethyl-Histone H4-K20 antibody (STJ23971) at dilution of 1:200 (40x lens). Perform microwave antigen retrieval with 10 mM PBS buffer pH 7. 2 before commencing with immunohistochemistry staining protocol.



Immunohistochemistry of paraffin-embedded mouse testis using DiMethyl-Histone H4-K20 antibody (STJ23971) at dilution of 1:200 (40x lens). Perform microwave antigen retrieval with 10 mM PBS buffer pH 7. 2 before commencing with immunohistochemistry staining protocol.