

## Anti-GDF15 antibody (49-308) (STJ23764)

STJ23764

### GENERAL INFORMATION

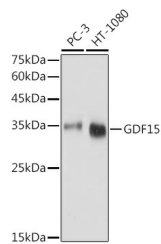
|                          |   |
|--------------------------|---|
| <b>Product Type</b>      | Primary antibodies  |
| <b>Short Description</b> | Rabbit polyclonal antibody anti-GDF15 (49-308) is suitable for use in Western Blot, Immunohistochemistry, Immunofluorescence and Immunoprecipitation. |
| <b>Applications</b>      | WB, IHC, IF, IP   |
| <b>Host/Source</b>       | Rabbit  |
| <b>Reactivity</b>        | Human, Mouse, Rat   |

### PRODUCT PROPERTIES

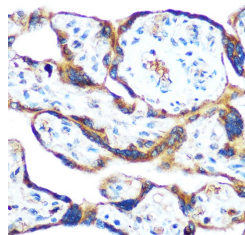
|                            |   |
|----------------------------|---|
| <b>Clonality</b>           | Polyclonal  |
| <b>Clone ID</b>            |   |
| <b>Concentration</b>       |   |
| <b>Conjugation</b>         | Unconjugated  |
| <b>Purification</b>        | Affinity purification   |
| <b>Dilution Range</b>      | WB 1:500-1:2000<br>IHC 1:50-1:100<br>IF 1:50-1:200<br>IP 1:50-1:200 |
| <b>Formulation</b>         | PBS containing 0.02% Sodium Azide, 50% Glycerol, pH7.3.             |
| <b>Isotype</b>             | IgG   |
| <b>Storage Instruction</b> | Store in a freezer at -20°C and avoid freeze-thaw cycles.           |

### TARGET INFORMATION

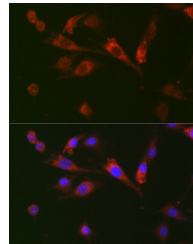
|                           |  |
|---------------------------|--|
| <b>Gene ID</b>            | 9518   |
| <b>Gene Symbol</b>        | GDF15  |
| <b>Uniprot ID</b>         | GDF15_HUMAN  |
| <b>Immunogen</b>          | Recombinant fusion protein containing a sequence corresponding to amino acids 49-308 of human GDF15 (NP_004855.2). |
| <b>Immunogen Region</b>   | 49-308   |
| <b>Specificity</b>        |  |
| <b>Immunogen Sequence</b> |  |



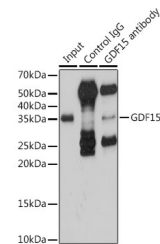
Western blot analysis of extracts of various cell lines, using GDF15 antibody (STJ23764) at 1:1000 dilution. Secondary antibody: HRP Goat Anti-rabbit IgG (H+L) at 1:10000 dilution. Lysates/proteins: 25ug per lane. Blocking buffer: 3% nonfat dry milk in TBST. Detection: ECL Basic Kit. Exposure time: 1s.



Immunohistochemistry of paraffin-embedded human placenta using GDF15 rabbit polyclonal antibody (STJ23764) at dilution of 1:100 (40x lens). Perform microwave antigen retrieval with 10 mM Tris/EDTA buffer, pH 9.0 before commencing with immunohistochemistry staining protocol.



Immunofluorescence analysis of BALB-3T3 cells using GDF15 rabbit polyclonal antibody (STJ23764) at dilution of 1:100 (40x lens). Blue: DAPI for nuclear staining.



Immunoprecipitation analysis of 200ug extracts of HT-1080 cells using 3ug GDF15 antibody (STJ23764). Western blot was performed from the immunoprecipitate using GDF15 antibody (STJ23764) at a dilution of 1:1000.

This product is suitable for in-vitro studies under the RESEARCH USE ONLY [RUO] licence. This product must not be used as for diagnostic or other medical purposes.  
St John's Laboratory Ltd, Knowledge Dock Business Centre, University Way, London, E16 2RD | Tel: 0208 223 3081