

Anti-FTH1 antibody (1-183) (STJ23718)

STJ23718

GENERAL INFORMATION

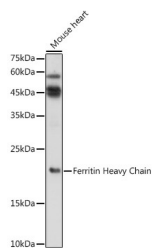
Product Type	Primary antibodies
Short Description	Rabbit polyclonal antibody anti-Ferritin Heavy Chain (1-183) is suitable for use in Western Blot, Immunohistochemistry and Immunofluorescence.
Applications	WB, IHC, IF
Host/Source	Rabbit
Reactivity	Human, Mouse, Rat

PRODUCT PROPERTIES

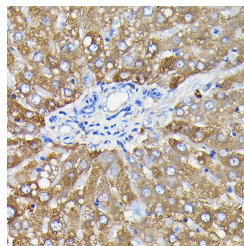
Clonality	Polyclonal
Clone ID	
Concentration	
Conjugation	Unconjugated
Purification	Affinity purification
Dilution Range	WB 1:500-1:2000 IHC 1:50-1:200 IF 1:50-1:200
Formulation	PBS containing 0.02% Sodium Azide, 50% Glycerol, pH7.3.
Isotype	IgG
Storage Instruction	Store in a freezer at -20°C and avoid freeze-thaw cycles.

TARGET INFORMATION

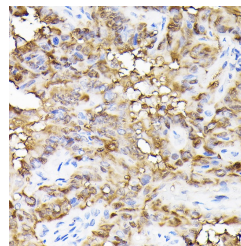
Gene ID	2495
Gene Symbol	FTH1
Uniprot ID	FRIH_HUMAN
Immunogen	Recombinant fusion protein containing a sequence corresponding to amino acids 1-183 of human Ferritin Heavy Chain (NP_002023.2).
Immunogen Region	1-183
Specificity	
Immunogen Sequence	



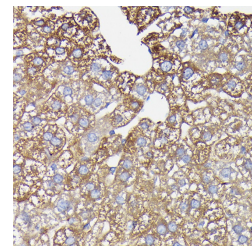
Western blot analysis of extracts of mouse heart, using Ferritin Heavy Chain antibody (STJ23718) at 1:1000 dilution. Secondary antibody: HRP Goat Anti-rabbit IgG (H+L) at 1:10000 dilution. Lysates/proteins: 25ug per lane. Blocking buffer: 3% nonfat dry milk in TBST. Detection: ECL Enhanced Kit. Exposure time: 180s.



Immunohistochemistry of paraffin-embedded rat liver using Ferritin Heavy Chain rabbit polyclonal antibody (STJ23718) at dilution of 1:100 (40x lens).



Immunohistochemistry of paraffin-embedded human thyroid cancer using Ferritin Heavy Chain rabbit polyclonal antibody (STJ23718) at dilution of 1:100 (40x lens).



Immunohistochemistry of paraffin-embedded mouse liver using Ferritin Heavy Chain rabbit polyclonal antibody (STJ23718) at dilution of 1:100 (40x lens).