

Anti-FSCN1 antibody (394-493) (STJ23712)

STJ23712

GENERAL INFORMATION

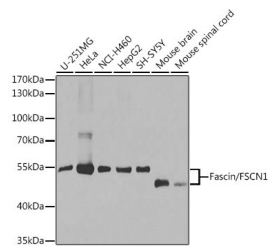
Product Type	Primary antibodies
Short Description	Rabbit polyclonal antibody anti-FSCN1 (394-493) is suitable for use in Western Blot, Immunohistochemistry and Immunofluorescence.
Applications	WB, IHC, IF
Host/Source	Rabbit
Reactivity	Human, Mouse, Rat

PRODUCT PROPERTIES

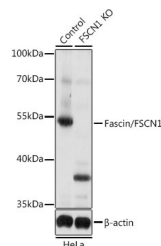
Clonality	Polyclonal
Clone ID	
Concentration	
Conjugation	Unconjugated
Purification	Affinity purification
Dilution Range	WB 1:500-1:2000 IHC 1:50-1:200 IF 1:50-1:200
Formulation	PBS containing 0.02% Sodium Azide, 50% Glycerol, pH7.3.
Isotype	IgG
Storage Instruction	Store in a freezer at -20°C and avoid freeze-thaw cycles.

TARGET INFORMATION

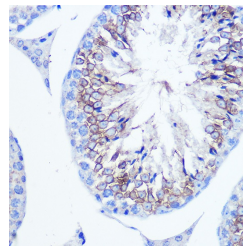
Gene ID	6624
Gene Symbol	FSCN1
Uniprot ID	FSCN1_HUMAN
Immunogen	Recombinant fusion protein containing a sequence corresponding to amino acids 394-493 of human Fascin/Fascin/FSCN1 (NP_003079.1).
Immunogen Region	394-493
Specificity	
Immunogen Sequence	



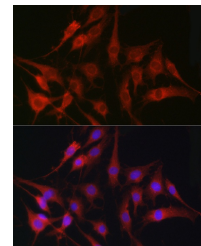
Western blot analysis of extracts of various cell lines, using Fascin/Fascin/FSCN1 antibody (STJ23712) at 1:1000 dilution. Secondary antibody: HRP Goat Anti-rabbit IgG (H+L) at 1:10000 dilution. Lysates/proteins: 25ug per lane. Blocking buffer: 3% nonfat dry milk in TBST. Detection: ECL Basic Kit. Exposure time: 30s.



Western blot analysis of extracts from normal (control) and Fascin/Fascin/FSCN1 knockout (KO) HeLa cells, using Fascin/Fascin/FSCN1 antibody (STJ23712) at 1:1000 dilution. Secondary antibody: HRP Goat Anti-rabbit IgG (H+L) at 1:10000 dilution. Lysates/proteins: 25ug per lane. Blocking buffer: 3% nonfat dry milk in TBST. Detection: ECL Basic Kit. Exposure time: 5s.



Immunohistochemistry of paraffin-embedded mouse testis using [KO Validated] Fascin/Fascin/FSCN1 rabbit polyclonal antibody (STJ23712) at dilution of 1:100 (40x lens).



Immunofluorescence analysis of C6 cells using [KO Validated] Fascin/Fascin/FSCN1 rabbit polyclonal antibody (STJ23712) at dilution of 1:100 (40x lens). Blue: DAPI for nuclear staining.