

Anti-VEGFD antibody (20-220) (STJ23665)

STJ23665

GENERAL INFORMATION

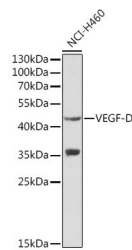
Product Type	Primary antibodies
Short Description	Rabbit polyclonal antibody anti-FIGF (20-220) is suitable for use in Western Blot and Immunohistochemistry.
Applications	WB, IHC
Host/Source	Rabbit
Reactivity	Human

PRODUCT PROPERTIES

Clonality	Polyclonal
Clone ID	
Concentration	
Conjugation	Unconjugated
Purification	Affinity purification
Dilution Range	WB 1:500-1:2000 IHC 1:50-1:200
Formulation	PBS containing 0.02% Sodium Azide, 50% Glycerol, pH7.3.
Isotype	IgG
Storage Instruction	Store in a freezer at -20°C and avoid freeze-thaw cycles.

TARGET INFORMATION

Gene ID	2277
Gene Symbol	VEGFD
Uniprot ID	VEGFD_HUMAN
Immunogen	Recombinant fusion protein containing a sequence corresponding to amino acids 20-220 of human VEGF-D (NP_004460.1).
Immunogen Region	20-220
Specificity	
Immunogen Sequence	



Western blot analysis of extracts of NCI-H460 cells, using VEGFD antibody (STJ23665) at 1:1000 dilution. Secondary antibody: HRP Goat Anti-rabbit IgG (H+L) at 1:10000 dilution. Lysates/proteins: 25µg per lane. Blocking buffer: 3% nonfat dry milk in TBST.