

Anti-FGFR2 antibody (1-100) (STJ23658)

STJ23658

GENERAL INFORMATION

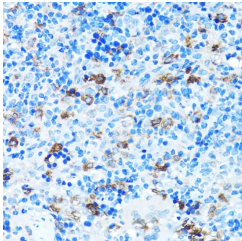
Product Type	Primary antibodies
Short Description	Rabbit polyclonal antibody anti-FGFR2 (1-100) is suitable for use in Immunohistochemistry.
Applications	IHC
Host/Source	Rabbit
Reactivity	Human, Mouse, Rat

PRODUCT PROPERTIES

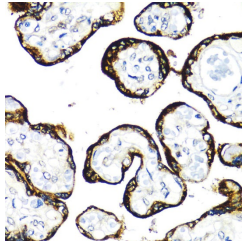
Clonality	Polyclonal
Clone ID	—
Concentration	—
Conjugation	Unconjugated
Purification	Affinity purification
Dilution Range	IHC 1:50-1:200
Formulation	PBS containing 0.02% Sodium Azide, 50% Glycerol, pH7.3.
Isotype	IgG
Storage Instruction	Store in a freezer at -20°C and avoid freeze-thaw cycles.

TARGET INFORMATION

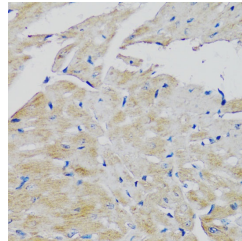
Gene ID	2263
Gene Symbol	FGFR2
Uniprot ID	FGFR2_HUMAN
Immunogen	A synthetic peptide corresponding to a sequence within amino acids 1-100 of human FGFR2 (NP_000132.3).
Immunogen Region	1-100
Specificity	—
Immunogen Sequence	—



Immunohistochemistry of paraffin-embedded rat spleen using FGFR2 antibody (STJ23658) at dilution of 1:100 (40x lens).



Immunohistochemistry of paraffin-embedded human placenta using FGFR2 antibody (STJ23658) at dilution of 1:100 (40x lens).



Immunohistochemistry of paraffin-embedded mouse heart using FGFR2 antibody (STJ23658) at dilution of 1:100 (40x lens).

This product is suitable for in-vitro studies under the RESEARCH USE ONLY [RUO] licence. This product must not be used as for diagnostic or other medical purposes.
St John's Laboratory Ltd, Knowledge Dock Business Centre, University Way, London, E16 2RD | Tel: 0208 223 3081