

Anti-FES antibody (120-420) (STJ23648)

STJ23648

GENERAL INFORMATION

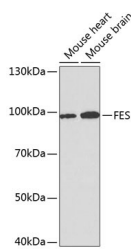
Product Type	Primary antibodies
Short Description	Rabbit polyclonal antibody anti-FES (120-420) is suitable for use in Western Blot.
Applications	WB
Host/Source	Rabbit
Reactivity	Mouse

PRODUCT PROPERTIES

Clonality	Polyclonal
Clone ID	
Concentration	
Conjugation	Unconjugated
Purification	Affinity purification
Dilution Range	WB 1:500-1:2000
Formulation	PBS containing 0.02% Sodium Azide, 50% Glycerol, pH7.3.
Isotype	IgG
Storage Instruction	Store in a freezer at -20°C and avoid freeze-thaw cycles.

TARGET INFORMATION

Gene ID	2242
Gene Symbol	FES
Uniprot ID	FES_HUMAN
Immunogen	Recombinant fusion protein containing a sequence corresponding to amino acids 120-420 of human FES (NP_001137256.1).
Immunogen Region	120-420
Specificity	
Immunogen Sequence	



Western blot analysis of extracts of various cell lines, using FES antibody (STJ23648) at 1:1000 dilution. Secondary antibody: HRP Goat Anti-rabbit IgG (H+L) at 1:10000 dilution. Lysates/proteins: 25µg per lane. Blocking buffer: 3% nonfat dry milk in TBST.