

Anti-FEN1 antibody (50-380) (STJ23646)

STJ23646

GENERAL INFORMATION

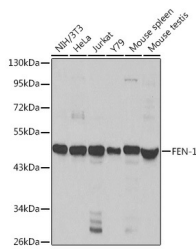
Product Type	Primary antibodies
Short Description	Rabbit polyclonal antibody anti-FEN1 (50-380) is suitable for use in Western Blot, Immunohistochemistry, Immunofluorescence and Immunoprecipitation.
Applications	WB, IHC, IF, IP
Host/Source	Rabbit
Reactivity	Human, Mouse

PRODUCT PROPERTIES

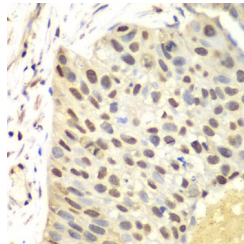
Clonality	Polyclonal
Clone ID	
Concentration	
Conjugation	Unconjugated
Purification	Affinity purification
Dilution Range	WB 1:500-1:2000 IHC 1:50-1:200 IF 1:10-1:100 IP 1:50-1:200
Formulation	PBS containing 0.02% Sodium Azide, 50% Glycerol, pH7.3.
Isotype	IgG
Storage	Store in a freezer at -20°C and avoid freeze-thaw cycles.
Instruction	

TARGET INFORMATION

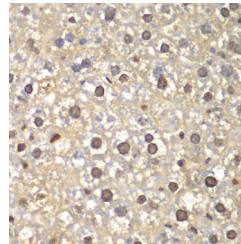
Gene ID	2237
Gene Symbol	FEN1
Uniprot ID	FEN1_HUMAN
Immunogen	Recombinant fusion protein containing a sequence corresponding to amino acids 50-380 of human FEN-1 (NP_004102.1).
Immunogen Region	50-380
Specificity	
Immunogen Sequence	



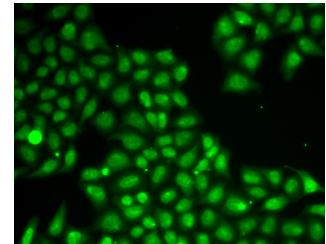
Western blot analysis of extracts of various cell lines, using FEN-1 antibody (STJ23646) at 1:1000 dilution. Secondary antibody: HRP Goat Anti-rabbit IgG (H+L) at 1:10000 dilution. Lysates/proteins: 25µg per lane. Blocking buffer: 3% nonfat dry milk in TBST.



Immunohistochemistry of paraffin-embedded human lung cancer using FEN-1 antibody (STJ23646) at dilution of 1:100 (40x lens). Perform microwave antigen retrieval with 10 mM PBS buffer pH 7. 2 before commencing with immunohistochemistry staining protocol.



Immunohistochemistry of paraffin-embedded mouse liver using FEN-1 antibody (STJ23646) at dilution of 1:100 (40x lens). Perform microwave antigen retrieval with 10 mM PBS buffer pH 7. 2 before commencing with immunohistochemistry staining protocol.



Immunofluorescence analysis of A549 cells using FEN-1 antibody (STJ23646).

This product is suitable for in-vitro studies under the RESEARCH USE ONLY [RUO] licence. This product must not be used as for diagnostic or other medical purposes.
St John's Laboratory Ltd, Knowledge Dock Business Centre, University Way, London, E16 2RD | Tel: 0208 223 3081