

Anti-FANCC antibody (319-558) (STJ23623)

STJ23623

GENERAL INFORMATION

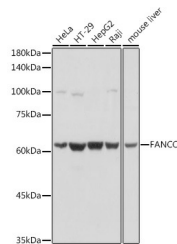
Product Type	Primary antibodies
Short Description	Rabbit polyclonal antibody anti-FANCC (319-558) is suitable for use in Western Blot, Immunohistochemistry and Immunofluorescence.
Applications	WB, IHC, IF
Host/Source	Rabbit
Reactivity	Human, Mouse, Rat

PRODUCT PROPERTIES

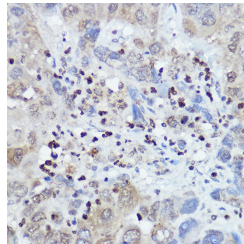
Clonality	Polyclonal
Clone ID	
Concentration	
Conjugation	Unconjugated
Purification	Affinity purification
Dilution Range	WB 1:500-1:2000 IHC 1:50-1:200 IF 1:50-1:200
Formulation	PBS containing 0.02% Sodium Azide, 50% Glycerol, pH7.3.
Isotype	IgG
Storage Instruction	Store in a freezer at -20°C and avoid freeze-thaw cycles.

TARGET INFORMATION

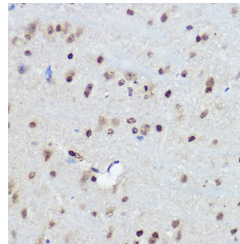
Gene ID	2176
Gene Symbol	FANCC
Uniprot ID	FANCC_HUMAN
Immunogen	Recombinant fusion protein containing a sequence corresponding to amino acids 319-558 of human FANCC (NP_000127.2).
Immunogen Region	319-558
Specificity	
Immunogen Sequence	



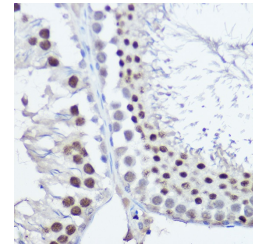
Western blot analysis of extracts of various cell lines, using FANCC antibody (STJ23623) at 1:1000 dilution. Secondary antibody: HRP Goat Anti-rabbit IgG (H+L) at 1:10000 dilution. Lysates/proteins: 25µg per lane. Blocking buffer: 3% nonfat dry milk in TBST. Detection: ECL Basic Kit. Exposure time: 1s.



Immunohistochemistry of paraffin-embedded human liver cancer using FANCC antibody (STJ23623) at dilution of 1:100 (40x lens).



Immunohistochemistry of paraffin-embedded mouse brain using FANCC antibody (STJ23623) at dilution of 1:100 (40x lens).



Immunohistochemistry of paraffin-embedded Rat testis using FANCC antibody (STJ23623) at dilution of 1:100 (40x lens).