

Anti-EMD antibody (1-220) (STJ23533)

STJ23533

GENERAL INFORMATION

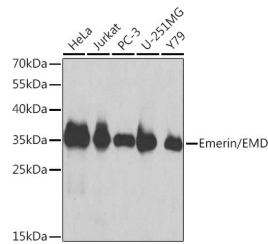
Product Type	Primary antibodies
Short Description	Rabbit polyclonal antibody anti-EMD (1-220) is suitable for use in Western Blot, Immunohistochemistry and Immunofluorescence.
Applications	WB, IHC, IF
Host/Source	Rabbit
Reactivity	Human, Mouse

PRODUCT PROPERTIES

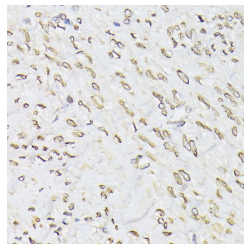
Clonality	Polyclonal
Clone ID	
Concentration	
Conjugation	Unconjugated
Purification	Affinity purification
Dilution Range	WB 1:500-1:2000 IHC 1:50-1:200 IF 1:20-1:100
Formulation	PBS containing 0.02% Sodium Azide, 50% Glycerol, pH7.3.
Isotype	IgG
Storage Instruction	Store in a freezer at -20°C and avoid freeze-thaw cycles.

TARGET INFORMATION

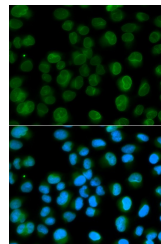
Gene ID	2010
Gene Symbol	EMD
Uniprot ID	EMD_HUMAN
Immunogen	Recombinant fusion protein containing a sequence corresponding to amino acids 1-220 of human Emerin/Emerin/EMD (NP_000108.1).
Immunogen Region	1-220
Specificity	
Immunogen Sequence	



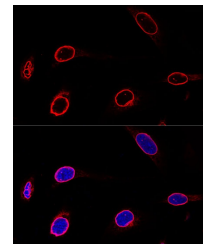
Western blot analysis of extracts of various cell lines, using Emerin/Emerin/EMD antibody (STJ23533) at 1:1000 dilution. Secondary antibody: HRP Goat Anti-rabbit IgG (H+L) at 1:10000 dilution. Lysates/proteins: 25µg per lane. Blocking buffer: 3% nonfat dry milk in TBST.



Immunohistochemistry of paraffin-embedded human uterus using Emerin/Emerin/EMD antibody (STJ23533) at dilution of 1:100 (40x lens).



Immunofluorescence analysis of HeLa cells using Emerin/Emerin/EMD antibody (STJ23533). Blue: DAPI for nuclear staining.



Confocal immunofluorescence analysis of U-2 OS cells using Emerin/Emerin/EMD Polyclonal Antibody (STJ23533) at dilution of 1:100. Blue: DAPI for nuclear staining.

This product is suitable for in-vitro studies under the RESEARCH USE ONLY [RUO] licence. This product must not be used as for diagnostic or other medical purposes.
St John's Laboratory Ltd, Knowledge Dock Business Centre, University Way, London, E16 2RD | Tel: 0208 223 3081