

Anti-ELAVL1 antibody (1-326) (STJ23524)

STJ23524

GENERAL INFORMATION

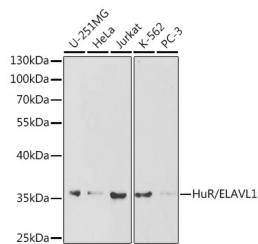
Product Type	Primary antibodies
Short Description	Rabbit polyclonal antibody anti-HuR/ELAVL1 (1-326) is suitable for use in Western Blot, Immunohistochemistry and Immunofluorescence.
Applications	WB, IHC, IF
Host/Source	Rabbit
Reactivity	Human, Mouse, Rat

PRODUCT PROPERTIES

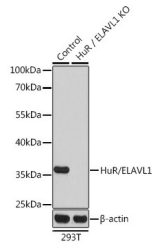
Clonality	Polyclonal
Clone ID	
Concentration	
Conjugation	Unconjugated
Purification	Affinity purification
Dilution Range	WB 1:500-1:2000 IHC 1:100-1:200 IF 1:50-1:200
Formulation	PBS containing 0.02% Sodium Azide, 50% Glycerol, pH7.3.
Isotype	IgG
Storage Instruction	Store in a freezer at -20°C and avoid freeze-thaw cycles.

TARGET INFORMATION

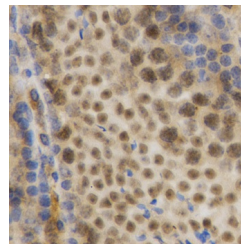
Gene ID	1994
Gene Symbol	ELAVL1
Uniprot ID	ELAV1_HUMAN
Immunogen	Recombinant fusion protein containing a sequence corresponding to amino acids 1-326 of human HuR/ELAVL1 (NP_001410.2).
Immunogen Region	1-326
Specificity	
Immunogen Sequence	



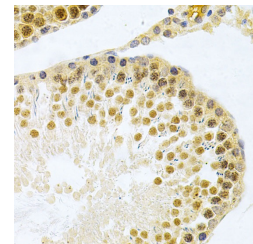
Western blot analysis of extracts of various cell lines, using HuR/ELAVL1 antibody (STJ23524) at 1:1000 dilution. Secondary antibody: HRP Goat Anti-rabbit IgG (H+L) at 1:10000 dilution. Lysates/proteins: 25ug per lane. Blocking buffer: 3% nonfat dry milk in TBST.



Western blot analysis of extracts from normal (control) and HuR/ELAVL1 knockout (KO) 293T cells, using HuR/ELAVL1 antibody (STJ23524) at 1:1000 dilution. Secondary antibody: HRP Goat Anti-rabbit IgG (H+L) at 1:10000 dilution. Lysates/proteins: 25ug per lane. Blocking buffer: 3% nonfat dry milk in TBST. Detection: ECL Basic Kit. Exposure time: 90s.



Immunohistochemistry of paraffin-embedded mouse testis using HuR/ELAVL1 Antibody (STJ23524) at dilution of 1:200 (40x lens).



Immunohistochemistry of paraffin-embedded rat testis using HuR/ELAVL1 Antibody (STJ23524) at dilution of 1:200 (40x lens).