

Anti-EIF6 antibody (1-245) (STJ23523)

STJ23523

GENERAL INFORMATION

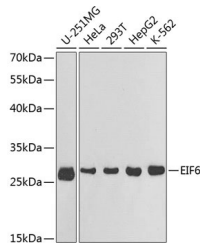
Product Type	Primary antibodies
Short Description	Rabbit polyclonal antibody anti-EIF6 (1-245) is suitable for use in Western Blot and Immunofluorescence.
Applications	WB, IF
Host/Source	Rabbit
Reactivity	Human

PRODUCT PROPERTIES

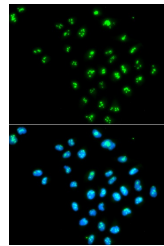
Clonality	Polyclonal
Clone ID	
Concentration	
Conjugation	Unconjugated
Purification	Affinity purification
Dilution Range	WB 1:500-1:2000 IF 1:50-1:200
Formulation	PBS containing 0.02% Sodium Azide, 50% Glycerol, pH7.3.
Isotype	IgG
Storage Instruction	Store in a freezer at -20°C and avoid freeze-thaw cycles.

TARGET INFORMATION

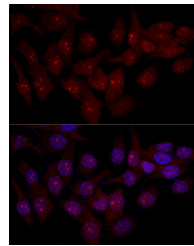
Gene ID	3692
Gene Symbol	EIF6
Uniprot ID	IF6_HUMAN
Immunogen	Recombinant fusion protein containing a sequence corresponding to amino acids 1-245 of human EIF6 (NP_852133.1).
Immunogen Region	1-245
Specificity	
Immunogen Sequence	



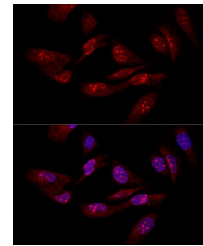
Western blot analysis of extracts of various cell lines, using EIF6 antibody (STJ23523) at 1:1000 dilution. Secondary antibody: HRP Goat Anti-rabbit IgG (H+L) at 1:10000 dilution. Lysates/proteins: 25µg per lane. Blocking buffer: 3% nonfat dry milk in TBST.



Immunofluorescence analysis of MCF-7 cells using EIF6 antibody (STJ23523). Blue: DAPI for nuclear staining.



Confocal immunofluorescence analysis of HeLa cells using EIF6 antibody (STJ23523) at dilution of 1:50. Blue: DAPI for nuclear staining.



Confocal immunofluorescence analysis of U-2OS cells using EIF6 antibody (STJ23523) at dilution of 1:50. Blue: DAPI for nuclear staining.

This product is suitable for in-vitro studies under the RESEARCH USE ONLY [RUO] licence. This product must not be used as for diagnostic or other medical purposes.
St John's Laboratory Ltd, Knowledge Dock Business Centre, University Way, London, E16 2RD | Tel: 0208 223 3081