

Anti-EIF4G2 antibody (750-850) (STJ23521)

STJ23521

GENERAL INFORMATION

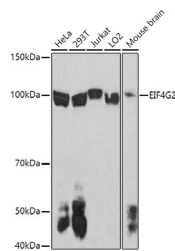
Product Type	Primary antibodies
Short Description	Rabbit polyclonal antibody anti-EIF4G2 (750-850) is suitable for use in Western Blot, Immunohistochemistry, Immunofluorescence and Immunoprecipitation.
Applications	WB, IHC, IF, IP
Host/Source	Rabbit
Reactivity	Human, Mouse, Rat

PRODUCT PROPERTIES

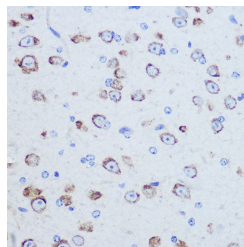
Clonality	Polyclonal
Clone ID	
Concentration	
Conjugation	Unconjugated
Purification	Affinity purification
Dilution Range	WB 1:500-1:1000 IHC 1:100-1:200 IF 1:50-1:200 IP 1:50-1:200
Formulation	PBS containing 0.02% Sodium Azide, 50% Glycerol, pH7.3.
Isotype	IgG
Storage	Store in a freezer at -20°C and avoid freeze-thaw cycles.
Instruction	

TARGET INFORMATION

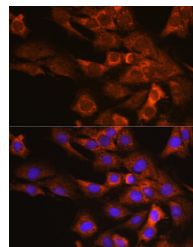
Gene ID	1982
Gene Symbol	EIF4G2
Uniprot ID	IF4G2_HUMAN
Immunogen	A synthetic peptide corresponding to a sequence within amino acids 750-850 of human EIF4G2 (NP_001409.3).
Immunogen Region	750-850
Specificity	
Immunogen Sequence	



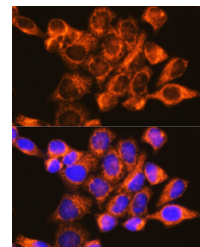
Western blot analysis of extracts of various cell lines, using EIF4G2 antibody (STJ23521) at 1:1000 dilution. Secondary antibody: HRP Goat Anti-rabbit IgG (H+L) at 1:10000 dilution. Lysates/proteins: 25ug per lane. Blocking buffer: 3% nonfat dry milk in TBST. Detection: ECL Basic Kit. Exposure time: 180s.



Immunohistochemistry of paraffin-embedded mouse brain using EIF4G2 rabbit polyclonal antibody (STJ23521) at dilution of 1:100 (40x lens).



Immunofluorescence analysis of C6 cells using EIF4G2 rabbit polyclonal antibody (STJ23521) at dilution of 1:100 (40x lens). Blue: DAPI for nuclear staining.



Immunofluorescence analysis of HeLa cells using EIF4G2 rabbit polyclonal antibody (STJ23521) at dilution of 1:100 (40x lens). Blue: DAPI for nuclear staining.

This product is suitable for in-vitro studies under the RESEARCH USE ONLY [RUO] licence. This product must not be used as for diagnostic or other medical purposes.
St John's Laboratory Ltd, Knowledge Dock Business Centre, University Way, London, E16 2RD | Tel: 0208 223 3081