

Anti-EHMT2 antibody (877-1176) (STJ23499)

STJ23499

GENERAL INFORMATION

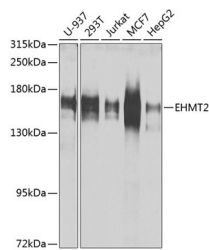
Product Type	Primary antibodies
Short Description	Rabbit polyclonal antibody anti-EHMT2 (877-1176) is suitable for use in Western Blot.
Applications	WB
Host/Source	Rabbit
Reactivity	Human, Mouse, Rat

PRODUCT PROPERTIES

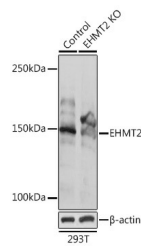
Clonality	Polyclonal
Clone ID	
Concentration	
Conjugation	Unconjugated
Purification	Affinity purification
Dilution Range	WB 1:500-1:2000
Formulation	PBS containing 0.02% Sodium Azide, 50% Glycerol, pH7.3.
Isotype	IgG
Storage Instruction	Store in a freezer at -20°C and avoid freeze-thaw cycles.

TARGET INFORMATION

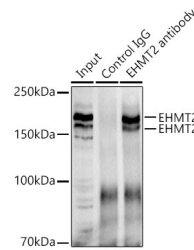
Gene ID	10919
Gene Symbol	EHMT2
Uniprot ID	EHMT2_HUMAN
Immunogen	Recombinant fusion protein containing a sequence corresponding to amino acids 877-1176 of human EHMT2 (NP_079532.5).
Immunogen Region	877-1176
Specificity	
Immunogen Sequence	



Western blot analysis of extracts of various cell lines, using EHMT2 antibody (STJ23499) at 1:1000 dilution. Secondary antibody: HRP Goat Anti-rabbit IgG (H+L) at 1:10000 dilution. Lysates/proteins: 25ug per lane. Blocking buffer: 3% nonfat dry milk in TBST. Detection: ECL Basic Kit. Exposure time: 30s.



Western blot analysis of extracts from normal (control) and EHMT2 rabbit polyclonal antibody knockout (KO) 293T cells, using EHMT2 rabbit polyclonal antibody (STJ23499) at 1:1000 dilution. Secondary antibody: HRP Goat Anti-rabbit IgG (H+L) at 1:10000 dilution. Lysates/proteins: 25ug per lane. Blocking buffer: 3% nonfat dry milk in TBST. Detection: ECL Basic Kit. Exposure time: 1s.



Immunoprecipitation analysis of 300ug extracts of 293T cells using 3ug [KO Validated] EHMT2 antibody (STJ23499). Western blot was performed from the immunoprecipitate using [KO Validated] EHMT2 antibody (STJ23499) at a dilution of 1:1000.

This product is suitable for in-vitro studies under the RESEARCH USE ONLY [RUO] licence. This product must not be used as for diagnostic or other medical purposes.
 St John's Laboratory Ltd, Knowledge Dock Business Centre, University Way, London, E16 2RD | Tel: 0208 223 3081