

Anti-EDN1 antibody (18-212) (STJ23471)

STJ23471

GENERAL INFORMATION

Product Type	Primary antibodies
Short Description	Rabbit polyclonal antibody anti-Endothelin 1 (18-212) is suitable for use in Western Blot, Immunohistochemistry and Immunofluorescence.
Applications	WB, IHC, IF
Host/Source	Rabbit
Reactivity	Human, Mouse, Rat

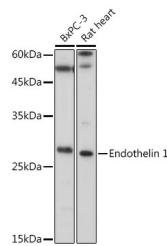
PRODUCT PROPERTIES

Clonality	Polyclonal
Clone ID	
Concentration	
Conjugation	Unconjugated
Purification	Affinity purification
Dilution Range	WB 1:500-1:2000 IHC 1:50-1:100 IF 1:50-1:100
Formulation	PBS containing 0.02% Sodium Azide, 50% Glycerol, pH7.3.
Isotype	IgG
Storage Instruction	Store in a freezer at -20°C and avoid freeze-thaw cycles.

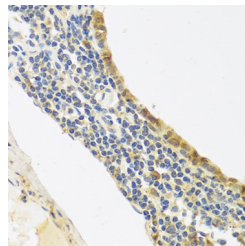
TARGET INFORMATION

Gene ID	1906
Gene Symbol	EDN1
Uniprot ID	EDN1_HUMAN
Immunogen	Recombinant fusion protein containing a sequence corresponding to amino acids 18-212 of human Endothelin 1 (NP_001946.3).

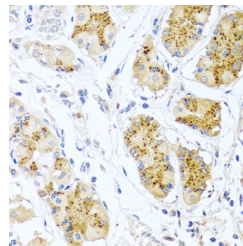
Immunogen Region	18-212
Specificity	
Immunogen Sequence	



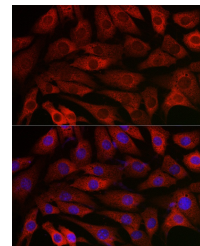
Western blot analysis of extracts of various cell lines, using Endothelin 1 antibody (STJ23471) at 1:1000 dilution. Secondary antibody: HRP Goat Anti-rabbit IgG (H+L) at 1:10000 dilution. Lysates/proteins: 25ug per lane. Blocking buffer: 3% nonfat dry milk in TBST. Detection: ECL Basic Kit. Exposure time: 1s.



Immunohistochemistry of paraffin-embedded human lung cancer using Endothelin 1 antibody (STJ23471) at dilution of 1:100 (40x lens).



Immunohistochemistry of paraffin-embedded human stomach using Endothelin 1 antibody (STJ23471) at dilution of 1:100 (40x lens).



Immunofluorescence analysis of NIH/3T3 cells using Endothelin 1 rabbit polyclonal antibody (STJ23471) at dilution of 1:25 (40x lens). Blue: DAPI for nuclear staining.

This product is suitable for in-vitro studies under the RESEARCH USE ONLY [RUO] licence. This product must not be used as for diagnostic or other medical purposes.
St John's Laboratory Ltd, Knowledge Dock Business Centre, University Way, London, E16 2RD | Tel: 0208 223 3081