

Anti-EDF1 antibody (1-148) (STJ23470)

STJ23470

GENERAL INFORMATION

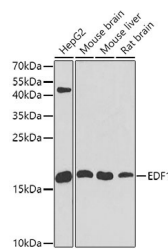
Product Type	Primary antibodies
Short Description	Rabbit polyclonal antibody anti-EDF1 (1-148) is suitable for use in Western Blot, Immunohistochemistry and Immunofluorescence.
Applications	WB, IHC, IF
Host/Source	Rabbit
Reactivity	Human, Mouse, Rat

PRODUCT PROPERTIES

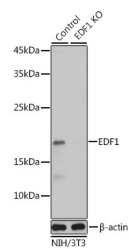
Clonality	Polyclonal
Clone ID	
Concentration	
Conjugation	Unconjugated
Purification	Affinity purification
Dilution Range	WB 1:500-1:2000 IHC 1:50-1:100 IF 1:50-1:100
Formulation	PBS containing 0.02% Sodium Azide, 50% Glycerol, pH7.3.
Isotype	IgG
Storage Instruction	Store in a freezer at -20°C and avoid freeze-thaw cycles.

TARGET INFORMATION

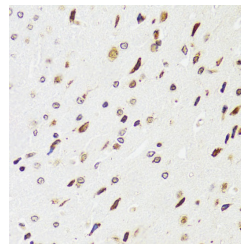
Gene ID	8721
Gene Symbol	EDF1
Uniprot ID	EDF1_HUMAN
Immunogen	Recombinant fusion protein containing a sequence corresponding to amino acids 1-148 of human EDF1 (NP_003783.1).
Immunogen Region	1-148
Specificity	
Immunogen Sequence	



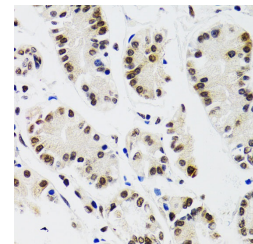
Western blot analysis of extracts of various cell lines, using EDF1 antibody (STJ23470) at 1:10000 dilution. Secondary antibody: HRP Goat Anti-rabbit IgG (H+L) at 1:10000 dilution. Lysates/proteins: 25ug per lane. Blocking buffer: 3% nonfat dry milk in TBST. Detection: ECL Basic Kit. Exposure time: 30s.



Western blot analysis of extracts from normal (control) and EDF1 rabbit polyclonal antibody knockout (KO) NIH/3T3 cells, using EDF1 rabbit polyclonal antibody (STJ23470) at 1:1000 dilution. Secondary antibody: HRP Goat Anti-rabbit IgG (H+L) at 1:10000 dilution. Lysates/proteins: 25ug per lane. Blocking buffer: 3% nonfat dry milk in TBST. Detection: ECL Basic Kit. Exposure time: 1s.



Immunohistochemistry of paraffin-embedded rat brain using EDF1 antibody (STJ23470) at dilution of 1:100 (40x lens).



Immunohistochemistry of paraffin-embedded human gastric cancer using EDF1 antibody (STJ23470) at dilution of 1:100 (40x lens).